

α Tubulin (Acetyl Lys352) Rabbit pAb

CatalogNo: YK0040

| Key Features

Host Species

- Rabbit

Reactivity

- Human, Mouse, Rat

Applications

- WB, ELISA

MW

- 50kD (Observed)

Isotype

- IgG

| Storage

Storage* -15°C to -25°C/1 year (Do not lower than -25°C)

Formulation Liquid in PBS containing 50% glycerol, 0.5% BSA and 0.02% sodium azide.

| Recommended Dilution Ratios

WB 1:500-1:2000

ELISA 1:20000

Not yet tested in other applications.

| Basic Information

Clonality Polyclonal

| Immunogen Information

Immunogen The antiserum was produced against synthesized Acetyl-peptide derived from human TUBA1B around the Acetylation site of Lys352. AA range:311-360

Specificity Acetyl-Tubulin α (K352) Polyclonal Antibody detects endogenous levels of Tubulin α protein only when acetylated at K352. The name of modified sites may be influenced by many factors, such as species (the modified site was not originally found in human samples) and the change of protein sequence (the previous protein sequence is incomplete, and the protein sequence may be prolonged with the development of protein sequencing technology). When naming, we will use the "numbers" in historical reference to keep the sites consistent with the reports. The antibody binds to the following modification sequence (lowercase letters are modification sites):GfKvG

Target Information

Gene name TUBA1A/TUBA1B/TUBA1C/TUBA3C/TUBA4A/TUBA8

Protein Name Tubulin alpha-1A chain/Tubulin alpha-1B chain/Tubulin alpha-1C chain/Tubulin alpha-3C/D chain/Tubulin alpha-4A chain/Tubulin alpha-8 chain

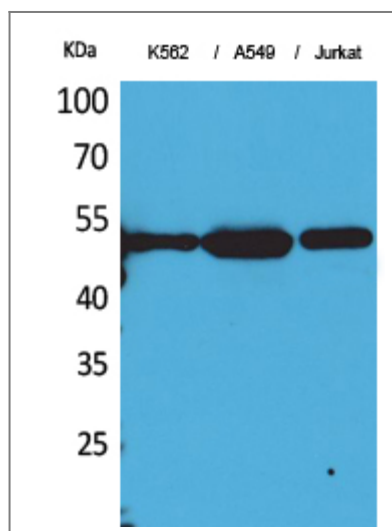
Organism	Gene ID	UniProt ID
Human	7846;	Q71U36;
Mouse	22142;	P68369;
Rat	64158;	P68370;

Cellular Localization Cytoplasm , cytoskeleton.

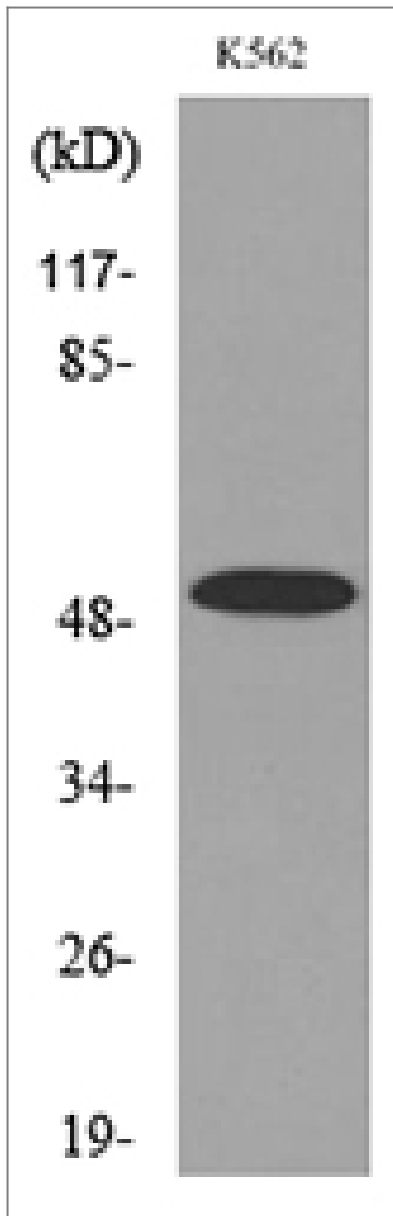
Tissue specificity Expressed at a high level in fetal brain.

Function Disease:Defects in TUBA1A are the cause of lissencephaly type 3 (LIS3) [MIM:611603]. LIS is characterized by a smooth brain surface due to the absence (agyria) or reduction (pachygyria) of surface convolutions. It is often associated with psychomotor retardation and seizures. LIS3 features include agyria or pachygyria or laminar heterotopia , severe mental retardation , motor delay , variable presence of seizures , and abnormalities of corpus callosum , hippocampus , cerebellar vermis and brainstem. ,Function:Tubulin is the major constituent of microtubules. It binds two moles of GTP , one at an exchangeable site on the beta chain and one at a non-exchangeable site on the alpha-chain. ,PTM:Undergoes a tyrosination/detyrosination cycle , the cyclic removal and re-addition of a C-terminal tyrosine residue by the enzymes tubulin tyrosine carboxypeptidase (TTCP) and tubulin tyrosine ligase (TTL) , respectively. ,similarity:Belongs to the tubulin family. ,subunit:Dimer of alpha and beta chains. ,tissue specificity:Expressed at a high level in fetal brain. ,

Validation Data



Western Blot analysis of K562, A549, Jurkat cells using Acetyl-Tubulin α (K352) Polyclonal Antibody. Secondary antibody (catalog#:RS0002) was diluted at 1:20000



Western blot analysis of lysate from K562 cells, using TUBA1B (Acetyl-Lys352) Antibody.

Contact information

Orders: order.cn@immunoway.com
Support: support.cn@immunoway.com
Telephone: 400-8787-807(China)
Website: <http://www.immunoway.com.cn>
Address: 2200 Ringwood Ave San Jose, CA 95131 USA



Please scan the QR code to access additional product information:
 α Tubulin (Acetyl Lys352) Rabbit pAb

For Research Use Only. Not for Use in Diagnostic Procedures.

[Antibody](#) | [ELISA Kits](#) | [Protein](#) | [Reagents](#)