

## CD279 (PD-1) (PTF0120) Mouse mAb

CatalogNo: YF0102 **Recombinant** 

### Key Features

#### Host Species

- Mouse

#### Reactivity

- Human

#### Applications

- FC,IF

#### Isotype

- Mouse IgG1/Kappa

### Storage

#### Storage\*

Store at 4°C short term. For long term storage, store at -20°C, avoiding freeze/thaw cycles.

#### Formulation

PBS, pH 7.4

### Recommended Dilution Ratios

IF 1:200-1:1000

FC:1 µg per million cells in 100 µl volume. For optimal results, the reagent should be titrated according to each specific application

### Basic Information

#### Clonality

Monoclonal

#### Clone Number

PTF0120

### Immunogen Information

#### Specificity

Endogenous

### Target Information

**Gene name** PDCD1 PD1

**Protein Name** Programmed cell death protein 1 (Protein PD-1) (hPD-1) (CD antigen CD279)

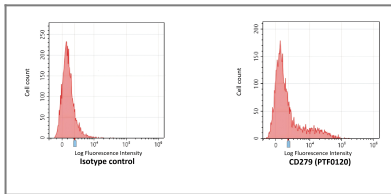
Organism	Gene ID	UniProt ID
Human	<a href="#">5133</a> ;	<a href="#">Q15116</a> ;

**Cellular Localization** Membranous, Cytoplasmic

**Tissue specificity** Placenta,Pooled tissue,Uterine cervix,

**Function** developmental stage:Induced at programmed cell death.,Disease:Genetic variation in PDCD1 is associated with susceptibility to systemic lupus erythematosus type 2 (SLEB2) [MIM:605218]. Systemic lupus erythematosus is a chronic, inflammatory and often febrile multisystemic disorder of connective tissue. It affects principally the skin, joints, kidneys and serosal membranes. It is thought to represent a failure of the regulatory mechanisms of the autoimmune system.,Function:Possible cell death inducer, in association with other factors.,similarity:Contains 1 Ig-like V-type (immunoglobulin-like) domain.,subunit:Monomer.,

## Validation Data



PHA-stimulated (3 days) human peripheral blood lymphocytes stained with Mouse IgG1,  $\kappa$  isotype control or purified CD279 (PTF0120) , followed by anti-mouse IgGs-PE.

## Contact information

Orders: [order.cn@immunoway.com](mailto:order.cn@immunoway.com)  
Support: [support.cn@immunoway.com](mailto:support.cn@immunoway.com)  
Telephone: 400-8787-807(China)  
Website: <http://www.immunoway.com.cn>  
Address: 2200 Ringwood Ave San Jose, CA 95131 USA



Please scan the QR code to access additional product information:  
**CD279 (PD-1) (PTF0120) Mouse mAb**

For Research Use Only. Not for Use in Diagnostic Procedures.

[Antibody](#) | [ELISA Kits](#) | [Protein](#) | [Reagents](#)