

## CD147 (PTF0036) Mouse mAb

CatalogNo: YF0034 **Recombinant** 

### Key Features

#### Host Species

- Mouse

#### Reactivity

- Human

#### Applications

- FC,IF

#### Isotype

- Mouse IgG1/Kappa

### Storage

#### Storage\*

Store at 4°C short term. For long term storage, store at -20°C, avoiding freeze/thaw cycles.

#### Formulation

PBS, pH 7.4

### Recommended Dilution Ratios

IF 1:200-1:1000

FC:1 µg per million cells in 100 µl volume. For optimal results, the reagent should be titrated according to each specific application

### Basic Information

#### Clonality

Monoclonal

#### Clone Number

PTF0036

### Immunogen Information

#### Immunogen

The specific immunogen used to produce this antibody is proprietary information.

#### Specificity

Endogenous

## Target Information

**Gene name** BSG

**Protein Name** Basigin

Organism	Gene ID	UniProt ID
Human	<a href="#">682</a> ;	<a href="#">P35613</a> ;

### Cellular Localization

Melanosome . Identified by mass spectrometry in melanosome fractions from stage I to stage IV. .; [Isoform 1]: Cell membrane ; Single-pass type I membrane protein . Photoreceptor inner segment . Cell projection , cilium , photoreceptor outer segment .; [Isoform 2]: Cell membrane ; Single-pass type I membrane protein . Endosome . Endoplasmic reticulum membrane ; Single-pass type I membrane protein . Basolateral cell membrane ; Single-pass type I membrane protein .; [Isoform 3]: Cell membrane ; Single-pass type I membrane protein .; [Isoform 4]: Cell membrane ; Single-pass type I membrane protein .

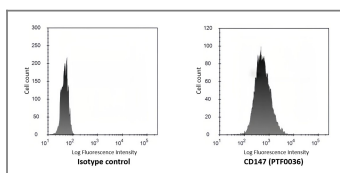
### Tissue specificity

[Isoform 1]: Retina-specific (PubMed:25957687) . Expressed in retinal cone photoreceptors (at protein level) (PubMed:25957687) .; [Isoform 2]: Expressed in erythrocytes (at protein level) (PubMed:26195724 , PubMed:28409866) . Highly expressed in melanoma cell lines (at protein level) (PubMed:11992541) . Highly expressed in the heart , kidney , skeletal muscle and testis (PubMed:21536654) .; [Isoform 3]: Highly expressed in the bone marrow , fetal liver , lung , testis and thymus. ; [Isoform 4]: Highly expressed in the bone marrow , fetal liver , lung , testis and thymus.

### Function

Function:Plays pivotal roles in spermatogenesis , embryo implantation , neural network formation and tumor progression. Stimulates adjacent fibroblasts to produce matrix metalloproteinases (MMPS) . May target monocarboxylate transporters SLC16A1 , SLC16A3 and SLC16A8 to plasma membranes of retinal pigment epithelium and neural retina. Seems to be a receptor for oligomannosidic glycans. In vitro , promotes outgrowth of astrocytic processes. ,induction:Enriched on the surface of tumor cells. Up-regulated in gliomas. Its expression levels correlate with malignant potential of the tumor. ,online information:Blood group antigen gene mutation database ,PTM:N-glycosylated. ,similarity:Contains 1 Ig-like C2-type (immunoglobulin-like) domain. ,similarity:Contains 1 Ig-like V-type (immunoglobulin-like) domain. ,subcellular location:Colocalizes with SLC16A1 and SLC16A8 (By similarity) . Identified by mass spectrometry in melanosome fractions from stage I to stage IV. ,subunit:Forms homooligomers in a cis-dependent manner on the plasma membrane. Forms a complex with MMP1 at the tumor cell surface. Interacts with SLC16A1 and SLC1A3; probably a BSG dimer is associated with a monocarboxylate transporter dimer. Interacts with ATP1B2 , MAG and L1CAM (By similarity) . Interacts with AJAP1. ,tissue specificity:Present only in vascular endothelium in non-neoplastic regions of the brain , whereas it is present in tumor cells but not in proliferating blood vessels in malignant gliomas. ,

## Validation Data



Human peripheral blood lymphocytes stained with Mouse IgG1,  $\kappa$  isotype control or purified CD147 (PTF0036) , followed by anti-mouse IgGs-PE

## | Contact information

Orders: order.cn@immunoway.com  
Support: support.cn@immunoway.com  
Telephone: 400-8787-807(China)  
Website: <http://www.immunoway.com.cn>  
Address: 2200 Ringwood Ave San Jose, CA 95131 USA



Please scan the QR code  
to access additional  
product information:  
**CD147 (PTF0036)**  
**Mouse mAb**

---

For Research Use Only. Not for Use in Diagnostic Procedures.

[Antibody](#) | [ELISA Kits](#) | [Protein](#) | [Reagents](#)