

TRBC2 (PTF0023) Mouse mAb

CatalogNo: YF0030 **Recombinant** 

Key Features

Host Species

- Mouse

Reactivity

- Human

Applications

- FC,IF

Isotype

- Mouse IgG2a/Kappa

Storage

Storage*

Store at 4°C short term. For long term storage, store at -20°C, avoiding freeze/thaw cycles.

Formulation

PBS, pH 7.4

Recommended Dilution Ratios

IF 1:200-1:1000

FC:1 µg per million cells in 100 µl volume. For optimal results, the reagent should be titrated according to each specific application

Basic Information

Clonality Monoclonal

Clone Number PTF0023

Immunogen Information

Immunogen The specific immunogen used to produce this antibody is proprietary information.

Specificity Endogenous

Target Information

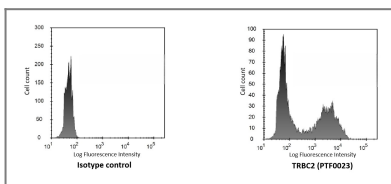
Gene name TRBC2
Protein Name T-cell receptor beta constant 2

Organism	Gene ID	UniProt ID
Human		A0A5B9 ;

Cellular Localization Cell membrane .

Function Constant region of T cell receptor (TR) beta chain (PubMed:24600447) .Alpha-beta T cell receptors are antigen specific receptors which are essential to the immune response and are present on the cell surface of T lymphocytes. Recognize peptide-major histocompatibility (MH) (pMH) complexes that are displayed by antigen presenting cells (APC) , a prerequisite for efficient T cell adaptive immunity against pathogens (PubMed:25493333) .Binding of alpha-beta TR to pMH complex initiates TR-CD3 clustering on the cell surface and intracellular activation of LCK that phosphorylates the ITAM motifs of CD3G , CD3D , CD3E and CD247 enabling the recruitment of ZAP70. In turn , ZAP70 phosphorylates LAT , which recruits numerous signaling molecules to form the LAT signalosome. The LAT signalosome propagates signal branching to three major signaling pathways , the calcium , the mitogen-activated protein kinase (MAPK) kinase and the nuclear factor NF-kappa-B (NF-kB) pathways , leading to the mobilization of transcription factors that are critical for gene expression and essential for T cell growth and differentiation (PubMed:23524462) .The T cell repertoire is generated in the thymus , by V-(D) -J rearrangement. This repertoire is then shaped by intrathymic selection events to generate a peripheral T cell pool of self-MH restricted , non-autoaggressive T cells. Post-thymic interaction of alpha-beta TR with the pMH complexes shapes TR structural and functional avidity (PubMed:15040585)

Validation Data



Human peripheral blood lymphocytes stained with Mouse IgG2a isotype control or purified TRBC2 (PTF0023) , followed by anti-mouse IgGs-PE

Contact information

Orders: order.cn@immunoway.com
Support: support.cn@immunoway.com
Telephone: 400-8787-807(China)
Website: <http://www.immunoway.com.cn>
Address: 2200 Ringwood Ave San Jose, CA 95131 USA



Please scan the QR code to access additional product information:
TRBC2 (PTF0023)
Mouse mAb

