

## STAT2 protein

CatalogNo: YD0100

### | Key Features

#### Reactivity

- Human

#### Applications

- WB, SDS-PAGE

### | Storage

**Storage\*** -20°C/6 month, -80°C for long storage

**Formulation** Liquid in PBS

### | Recommended Dilution Ratios

### | Basic Information

**Purity** SDS-PAGE >90%

### | Immunogen Information

**Sequence** Amino acid: 568-851, with his-MBP tag.

### | Target Information

**Gene name** STAT2

**Protein Name** STAT2 protein

Organism	Gene ID	UniProt ID
Human	<a href="#">6773</a> ;	<a href="#">P52630</a> ;
Mouse		<a href="#">Q9WVL2</a> ;

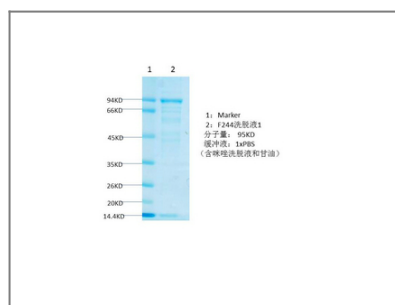
## Cellular Localization

Cytoplasm . Nucleus . Translocated into the nucleus upon activation by IFN-alpha/beta. .

## Function

transcription, regulation of transcription, DNA-dependent, regulation of transcription from RNA polymerase II promoter,intracellular signaling cascade, protein kinase cascade, JAK-STAT cascade, response to virus, regulation of transcription, regulation of RNA metabolic process,

## Validation Data



## Contact information

Orders: order.cn@immunoway.com  
Support: support.cn@immunoway.com  
Telephone: 400-8787-807(China)  
Website: <http://www.immunoway.com.cn>  
Address: 2200 Ringwood Ave San Jose, CA 95131 USA



Please scan the QR code to access additional product information:  
**STAT2 protein**

For Research Use Only. Not for Use in Diagnostic Procedures.

[Antibody](#) | [ELISA Kits](#) | [Protein](#) | [Reagents](#)