

S100 Beta protein

CatalogNo: YD0089

| Key Features

Reactivity

- Human

Applications

- WB, SDS-PAGE

| Storage

Storage* -20°C/6 month, -80°C for long storage

Formulation Liquid in PBS

| Recommended Dilution Ratios

| Basic Information

Purity SDS-PAGE >90%

| Immunogen Information

Sequence Amino acid: full length, with his-MBP tag.

| Target Information

Gene name S100 β

Protein Name S100 Beta protein

Organism	Gene ID	UniProt ID
Human	6285 ;	P04271 ;
Mouse		P50114 ;

Cellular Localization

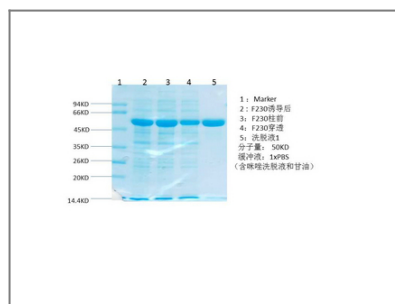
Cytoplasm . Nucleus .

Tissue specificity Although predominant among the water-soluble brain proteins, S100 is also found in a variety of other tissues.

Function

cell morphogenesis, cell morphogenesis involved in differentiation, axonogenesis, behavior, learning or memory, cell proliferation, cell projection organization, neuron differentiation, neuron projection development, cellular component morphogenesis, cell part morphogenesis, neuron development, cell morphogenesis involved in neuron differentiation, neuron projection morphogenesis, cell projection morphogenesis, neurological system process, cognition,

Validation Data



Contact information

Orders: order.cn@immunoway.com
Support: support.cn@immunoway.com
Telephone: 400-8787-807(China)
Website: <http://www.immunoway.com.cn>
Address: 2200 Ringwood Ave San Jose, CA 95131 USA



Please scan the QR code to access additional product information:
S100 Beta protein

For Research Use Only. Not for Use in Diagnostic Procedures.

[Antibody](#) | [ELISA Kits](#) | [Protein](#) | [Reagents](#)