

S100 protein

CatalogNo: YD0088

Key Features

Reactivity

- Human

Applications

- WB, SDS-PAGE

Storage

Storage* -20°C/6 month, -80°C for long storage

Formulation Liquid in PBS

Recommended Dilution Ratios

Basic Information

Purity SDS-PAGE >90%

Immunogen Information

Sequence Amino acid: full length, with his-MBP tag.

Target Information

Gene name S100A1

Protein Name S100 protein

Organism	Gene ID	UniProt ID
Human	6271 ;	P23297 ;
Mouse		P56565 ;

Cellular Localization

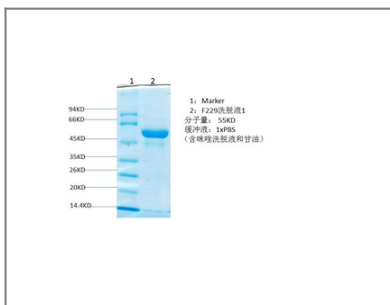
Cytoplasm . Sarcoplasmic reticulum . Mitochondrion .

Tissue specificity Highly prevalent in heart (PubMed:12804600, PubMed:1384693). Also found in lesser quantities in skeletal muscle and brain (PubMed:1384693).

Function

negative regulation of transcription from RNA polymerase II promoter, regulation of transcription, DNA-dependent, regulation of transcription from RNA polymerase II promoter, intracellular signaling cascade, regulation of heart contraction, negative regulation of biosynthetic process, negative regulation of macromolecule biosynthetic process, negative regulation of macromolecule metabolic process, negative regulation of gene expression, negative regulation of transcription, negative regulation of cellular biosynthetic process, regulation of system process, regulation of transcription, negative regulation of transcription, DNA-dependent, negative regulation of nucleobase, nucleoside, nucleotide and nucleic acid metabolic process, negative regulation of nitrogen compound metabolic process, regulation of RNA metabolic process, negative regulation of RNA metabolic process,

Validation Data



Contact information

Orders: order.cn@immunoway.com
Support: support.cn@immunoway.com
Telephone: 400-8787-807(China)
Website: <http://www.immunoway.com.cn>
Address: 2200 Ringwood Ave San Jose, CA 95131 USA



Please scan the QR code to access additional product information:
S100 protein

For Research Use Only. Not for Use in Diagnostic Procedures.

[Antibody](#) | [ELISA Kits](#) | [Protein](#) | [Reagents](#)