

## LC3B protein

CatalogNo: YD0062

### | Key Features

### | Storage

**Storage\*** -20°C/6 month, -80°C for long storage

**Formulation** Liquid in PBS

### | Recommended Dilution Ratios

### | Basic Information

**Source** E.coli

**Purification** E.coli

**Purity** SDS-PAGE >90%

### | Immunogen Information

**Squence** Amino acid: 1-72, with his-MBP tag.

### | Target Information

**Gene name** MAP1LC3B

**Protein Name** LC3B protein

Organism	Gene ID	UniProt ID
Human	<a href="#">81631</a> ;	<a href="#">Q9GZQ8</a> ;
Mouse		<a href="#">Q9CQV6</a> ;

## Cellular Localization

Cytoplasmic vesicle , autophagosome membrane ; Lipid-anchor . Endomembrane system ; Lipid-anchor . Mitochondrion membrane ; Lipid-anchor . Cytoplasm , cytoskeleton . Cytoplasmic vesicle . LC3-II binds to the autophagic membranes. LC3-II localizes with the mitochondrial inner membrane during Parkin-mediated mitophagy (PubMed:28017329) . Localizes also to discrete punctae along the ciliary axoneme. .

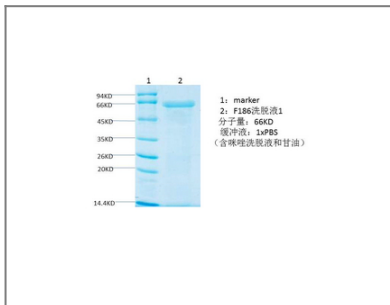
## Tissue specificity

Most abundant in heart , brain , skeletal muscle and testis. Little expression observed in liver.

## Function

proteolysis , autophagy , macromolecule catabolic process , modification-dependent protein catabolic process , protein catabolic process , modification-dependent macromolecule catabolic process , cellular protein catabolic process , cellular macromolecule catabolic process , proteolysis involved in cellular protein catabolic process ,

## Validation Data



## Contact information

Orders: order.cn@immunoway.com  
Support: support.cn@immunoway.com  
Telephone: 400-8787-807(China)  
Website: <http://www.immunoway.com.cn>  
Address: 2200 Ringwood Ave San Jose, CA 95131 USA



Please scan the QR code to access additional product information:  
**LC3B protein**

For Research Use Only. Not for Use in Diagnostic Procedures.

[Antibody](#) | [ELISA Kits](#) | [Protein](#) | [Reagents](#)