

ERK 3 protein

CatalogNo: YD0030

| Key Features

Reactivity

- Human

Applications

- WB, SDS-PAGE

| Storage

Storage* -20°C/6 month, -80°C for long storage

Formulation Liquid in PBS

| Recommended Dilution Ratios

WB 1:500-2000

| Basic Information

Source E.coli

Purification E.coli

Purity SDS-PAGE >90%

| Immunogen Information

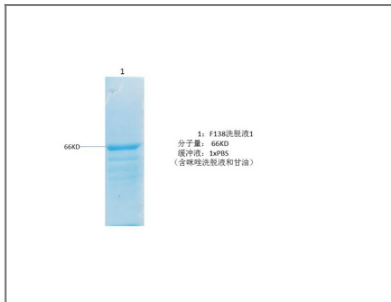
Sequence Amino acid: 538-721, with his-MBP tag.

| Target Information

Gene name MAPK6

Protein Name	ERK3 protein		
	Organism	Gene ID	UniProt ID
	Human	5597 ;	Q16659 ;
Cellular Localization	Cytoplasm . Nucleus . Translocates to the cytoplasm following interaction with MAPKAPK5. .		
Tissue specificity	Highest expression in the skeletal muscle, followed by the brain. Also found in heart, placenta, lung, liver, pancreas, kidney and skin fibroblasts.		
Function	Catalytic activity:ATP + a protein = ADP + a phosphoprotein.,cofactor:Magnesium.,Domain:The TXY motif contains the threonine and tyrosine residues whose phosphorylation activates the MAP kinases.,enzyme regulation:Activated by threonine and tyrosine phosphorylation.,Function:Phosphorylates microtubule-associated protein 2 (MAP2). May promote entry in the cell cycle.,PTM:Dually phosphorylated on Thr-626 and Tyr-628, which activates the enzyme.,similarity:Belongs to the protein kinase superfamily. CMGC Ser/Thr protein kinase family. MAP kinase subfamily.,similarity:Contains 1 protein kinase domain.,tissue specificity:Highest expression in the skeletal muscle, followed by the brain. Also found in heart, placenta, lung, liver, pancreas, kidney and skin fibroblasts.,		

Validation Data



Contact information

Orders: order.cn@immunoway.com
 Support: support.cn@immunoway.com
 Telephone: 400-8787-807(China)
 Website: <http://www.immunoway.com.cn>
 Address: 2200 Ringwood Ave San Jose, CA 95131 USA



Please scan the QR code
 to access additional
 product information:
ERK 3 protein