

Cleaved MMP20 (Tyr108) Rabbit pAb

CatalogNo: YC0188

Key Features

Host Species

- Rabbit

Reactivity

- Human, Mouse, Rat

Applications

- WB, IHC

MW

- 42kD, 53kD (Observed)

Isotype

- IgG

Storage

Storage* -15°C to -25°C/1 year (Do not lower than -25°C)

Formulation Liquid in PBS containing 50% glycerol, 0.5% BSA and 0.02% sodium azide.

Recommended Dilution Ratios

WB 1:500-2000

IHC 1:50-300

Basic Information

Clonality Polyclonal

Immunogen Information

Immunogen Synthesized peptide derived from human MMP20 (Cleaved-Tyr108)

Specificity This antibody detects endogenous levels of Human, Mouse, Rat MMP20 (Cleaved-Tyr108, protein was cleaved amino acid sequence between 107-108)

Target Information

Gene name MMP20

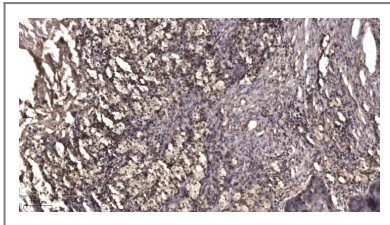
Protein Name MMP20 (Cleaved-Tyr108)

Organism	Gene ID	UniProt ID
Human	9313 ;	O60882 ;
Mouse	30800 ;	P57748 ;

Cellular Localization Secreted, extracellular space, extracellular matrix .

Tissue specificity Expressed specifically in the enamel organ.

Validation Data



Immunohistochemical analysis of paraffin-embedded human Squamous cell carcinoma of lung. 1, Antibody was diluted at 1:200(4° overnight). 2, Tris-EDTA,pH9.0 was used for antigen retrieval. 3,Secondary antibody was diluted at 1:200(room temperature, 45min).

Contact information

Orders: order.cn@immunoway.com
Support: support.cn@immunoway.com
Telephone: 400-8787-807(China)
Website: <http://www.immunoway.com.cn>
Address: 2200 Ringwood Ave San Jose, CA 95131 USA



Please scan the QR code to access additional product information:
Cleaved MMP20 (Tyr108) Rabbit pAb

For Research Use Only. Not for Use in Diagnostic Procedures.

[Antibody](#) | [ELISA Kits](#) | [Protein](#) | [Reagents](#)