

Cleaved ITIH3 (Asp651) Rabbit pAb

CatalogNo: YC0177

Key Features

Host Species

- Rabbit

Reactivity

- Human, Mouse, Rat

Applications

- WB, ELISA, IHC

MW

- 68kD, 95kD (Observed)

Isotype

- IgG

Storage

Storage* -15°C to -25°C/1 year (Do not lower than -25°C)

Formulation Liquid in PBS containing 50% glycerol, 0.5% BSA and 0.02% sodium azide.

Recommended Dilution Ratios

WB 1:500-2000

IHC 1:50-300

ELISA 1:2000-20000

Basic Information

Clonality Polyclonal

Immunogen Information

Immunogen Synthesized peptide derived from human ITIH3 (Cleaved-Asp651)

Specificity This antibody detects endogenous levels of Human, Mouse, Rat ITIH3 (Cleaved-Asp651, protein was cleaved amino acid sequence between 651-652)

Target Information

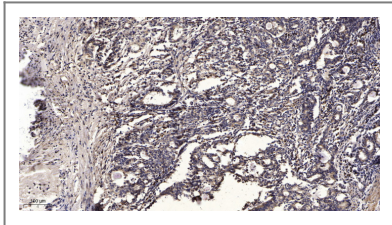
Gene name ITIH3

Protein Name ITIH3 (Cleaved-Asp651)

Organism	Gene ID	UniProt ID
Human	3699 ;	Q06033 ;
Mouse	16426 ;	Q61704 ;
Rat	50693 ;	Q63416 ;

Cellular Localization Secreted.

Validation Data



Immunohistochemical analysis of paraffin-embedded human Gastric adenocarcinoma. 1, Antibody was diluted at 1:200 (4°C overnight). 2, Tris-EDTA, pH9.0 was used for antigen retrieval. 3, Secondary antibody was diluted at 1:200 (room temperature, 45min).

Contact information

Orders: order.cn@immunoway.com
Support: support.cn@immunoway.com
Telephone: 400-8787-807(China)
Website: <http://www.immunoway.com.cn>
Address: 2200 Ringwood Ave San Jose, CA 95131 USA



Please scan the QR code to access additional product information:
Cleaved ITIH3 (Asp651) Rabbit pAb

For Research Use Only. Not for Use in Diagnostic Procedures.

[Antibody](#) | [ELISA Kits](#) | [Protein](#) | [Reagents](#)