

## Cleaved ITGA2B (light chain form 1,Gln891) Rabbit pAb

CatalogNo: YC0175

### Key Features

#### Host Species

- Rabbit

#### Reactivity

- Human,Rat,Mouse,

#### Applications

- WB,IHC

#### MW

- 16kD,110kD (Observed)

#### Isotype

- IgG

### Recommended Dilution Ratios

WB 1:500-2000

IHC 1:50-300

### Storage

#### Storage\*

-15°C to -25°C/1 year(Do not lower than -25°C)

#### Formulation

Liquid in PBS containing 50% glycerol, 0.5% BSA and 0.02% sodium azide.

### Basic Information

#### Clonality

Polyclonal

### Immunogen Information

#### Immunogen

Synthesized peptide derived from human ITGA2B (light chain form 1, Cleaved-Gln891)

#### Specificity

This antibody detects endogenous levels of Human ITGA2B (light chain form 1, Cleaved-Gln891, protein was cleaved amino acid sequence between 890-891 ). It doesn't recognize light chain form 2

### Target Information

**Gene name** ITGA2B GP2B ITGAB

**Protein Name** ITGA2B (light chain form 1, Cleaved-Gln891)

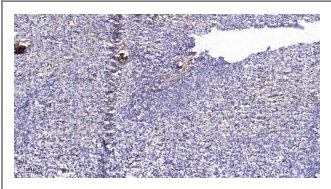
Organism	Gene ID	UniProt ID
Human	<a href="#">3674</a> ;	<a href="#">P08514</a> ;
Mouse	<a href="#">16399</a> ;	<a href="#">Q9QUM0</a> ;

**Cellular Localization** Membrane; Single-pass type I membrane protein.

**Tissue specificity** Isoform 1 and isoform 2 are expressed in platelets and megakaryocytes, but not in reticulocytes. Not detected in Jurkat, nor in U937 cell lines (PubMed:2351656). Isoform 3 is expressed in prostate adenocarcinoma, as well as in several erythroleukemia, prostate adenocarcinoma and melanoma cell lines, including PC-3, DU-145, HEL, WM983A, WM983B and WM35. Not detected in platelets, nor in normal prostate (at protein level) (PubMed:9809974).

**Function** Disease:Defects in ITGA2B are a cause of Glanzmann thrombasthenia (GT) [MIM:273800]; also known as thrombasthenia of Glanzmann and Naegeli. This autosomal recessive disorder is the most common inherited disease of platelets. GT is characterized by mucocutaneous bleeding of mild-to-moderate severity and the inability of this integrin to recognize macromolecular or synthetic peptide ligands. GT has been classified clinically into types I and II. In type I, platelets show absence of the glycoprotein IIb/beta-3 complexes at their surface and lack fibrinogen and clot retraction capability. In type II, the platelets express the glycoprotein IIb/beta-3 complex at reduced levels (5-20% controls), have detectable amounts of fibrinogen, and have low or moderate clot retraction capability. The platelets of GT 'variants' have normal or near normal (60-100%) expression of dysfunctional receptors.,Function:Integrin alpha-IIb/beta-3 is a receptor for fibronectin, fibrinogen, plasminogen, prothrombin, thrombospondin and vitronectin. It recognizes the sequence R-G-G-D in a wide array of ligands. It recognizes the sequence H-H-L-G-G-G-A-K-Q-A-G-D-V in fibrinogen gamma chain. Following activation integrin alpha-IIb/beta-3 brings about platelet/platelet interaction through binding of soluble fibrinogen. This step leads to rapid platelet aggregation which physically plugs ruptured endothelial cell surface.,polymorphism:Position 874 is associated with platelet-specific alloantigen HPA-3/BAK/LEK. HPA-3A/BAK(A)/LEK(A) has Ile-874 and HPA-3B/BAK(B)/LEK(B) has Ser-874. HPA-3B is involved in neonatal alloimmune thrombocytopenia (NAIT or NATP).,similarity:Belongs to the integrin alpha chain family.,similarity:Contains 7 FG-GAP repeats.,subunit:Heterodimer of an alpha and a beta subunit. The alpha subunit is composed of an heavy and a light chain linked by a disulfide bond. Alpha-IIb associates with beta-3. Directly interacts with RNF181.,tissue specificity:Isoform 1 and isoform 2 were identified in platelets and megakaryocytes, but not in reticulocytes or in Jurkat and U937 white blood cell line. Isoform 3 is expressed by leukemia, prostate adenocarcinoma and melanoma cells but not by platelets or normal prostate or breast epithelial cells.,

## Validation Data



Immunohistochemical analysis of paraffin-embedded human spleen. 1, Antibody was diluted at 1:200(4° overnight). 2, Tris-EDTA,pH9.0 was used for antigen retrieval. 3,Secondary antibody was diluted at 1:200(room temperature, 45min).

## | Contact information

Orders: order.cn@immunoway.com  
Support: support.cn@immunoway.com  
Telephone: 400-8787-807(China)  
Website: <http://www.immunoway.com.cn>  
Address: 2200 Ringwood Ave San Jose, CA 95131 USA



Please scan the QR code to access additional product information:

**Cleaved ITGA2B  
(light chain form  
1,Gln891) Rabbit  
pAb**

---

For Research Use Only. Not for Use in Diagnostic Procedures.

[Antibody](#) | [ELISA Kits](#) | [Protein](#) | [Reagents](#)