

Cleaved ITGA8 (heavy chain,Arg906) Rabbit pAb

CatalogNo: YC0171

Key Features

Host Species

- Rabbit

Reactivity

- Human,Mouse,Rat

Applications

- WB,IHC

MW

- 95kD,115kD (Observed)

Isotype

- IgG

Recommended Dilution Ratios

WB 1:500-2000

IHC 1:50-300

Storage

Storage*

-15°C to -25°C/1 year(Do not lower than -25°C)

Formulation

Liquid in PBS containing 50% glycerol, 0.5% BSA and 0.02% sodium azide.

Basic Information

Clonality

Polyclonal

Immunogen Information

Immunogen

Synthesized peptide derived from human ITGA8 (heavy chain, Cleaved-Arg906)

Specificity

This antibody detects endogenous levels of Human,Mouse,Rat ITGA8 (heavy chain, Cleaved-Arg906, protein was cleaved amino acid sequence between 906-907)

Target Information

Gene name

ITGA8

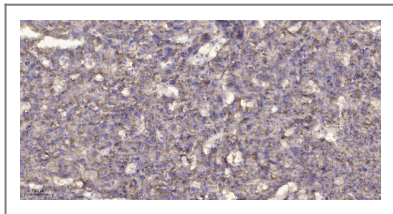
Protein Name ITGA8 (heavy chain, Cleaved-Arg906)

Organism	Gene ID	UniProt ID
Human	8516 ;	P53708 ;
Mouse	241226 ;	A2ARA8 ;

Cellular Localization Membrane ; Single-pass type I membrane protein . Cell membrane .

Tissue specificity Expressed in mesenchymal cells, including alveolar myofibroblasts, kidney mesangial cells and hepatic stellate cells and vascular and visceral smooth muscle (at protein level).

Validation Data



Immunohistochemical analysis of paraffin-embedded human liver cancer. 1, Antibody was diluted at 1:200(4° overnight). 2, Tris-EDTA,pH9.0 was used for antigen retrieval. 3,Secondary antibody was diluted at 1:200(room temperature, 45min).

Contact information

Orders: order.cn@immunoway.com
Support: support.cn@immunoway.com
Telephone: 400-8787-807(China)
Website: <http://www.immunoway.com.cn>
Address: 2200 Ringwood Ave San Jose, CA 95131 USA



Please scan the QR code to access additional product information:
Cleaved ITGA8 (heavy chain,Arg906) Rabbit pAb

For Research Use Only. Not for Use in Diagnostic Procedures.

[Antibody](#) | [ELISA Kits](#) | [Protein](#) | [Reagents](#)