

## Cleaved Thrombin Receptor (Ser42) Rabbit pAb

CatalogNo: YC0104

### Key Features

#### Host Species

- Rabbit

#### Reactivity

- Human, Mouse, Rat

#### Applications

- WB, ELISA

#### MW

- 46kD (Observed)

#### Isotype

- IgG

### Recommended Dilution Ratios

**WB 1:500-1:2000**

**ELISA 1:20000**

**Not yet tested in other applications.**

### Storage

#### Storage\*

-15°C to -25°C/1 year (Do not lower than -25°C)

#### Formulation

Liquid in PBS containing 50% glycerol, 0.5% BSA and 0.02% sodium azide.

### Basic Information

#### Clonality

Polyclonal

### Immunogen Information

#### Immunogen

The antiserum was produced against synthesized peptide derived from human PAR1. AA range: 23-72

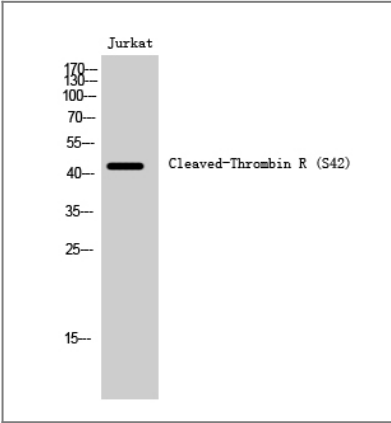
#### Specificity

Cleaved-Thrombin R (S42) Polyclonal Antibody detects endogenous levels of fragment of activated Thrombin R protein resulting from cleavage adjacent to S42.

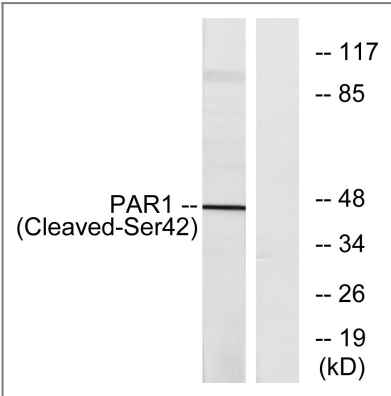
### Target Information

|                       |   |                        |                         |
|-----------------------|---|------------------------|-------------------------|
| Gene name             | F2R   |                        |                         |
| Protein Name          | Proteinase-activated receptor 1   |                        |                         |
|                       | Organism  | Gene ID                | UniProt ID              |
|                       | Human   | <a href="#">2149;</a>  | <a href="#">P25116;</a> |
|                       | Mouse   | <a href="#">14062;</a> | <a href="#">P30558;</a> |
|                       | Rat   |                        | <a href="#">P26824;</a> |
| Cellular Localization | Cell membrane; Multi-pass membrane protein.   |                        |                         |
| Tissue specificity    | Platelets and vascular endothelial cells.   |                        |                         |
| Function              | Function:High affinity receptor for activated thrombin coupled to G proteins that stimulate phosphoinositide hydrolysis. May play a role in platelets activation and in vascular development.,PTM:A proteolytic cleavage generates a new N-terminus that functions as a tethered ligand.,PTM:Phosphorylated; probably mediating desensitization prior to the uncoupling and internalization of the receptor.,similarity:Belongs to the G-protein coupled receptor 1 family.,tissue specificity:Platelets and vascular endothelial cells., |                        |                         |

| Validation Data



Western Blot analysis of Jurkat cells using Cleaved-Thrombin R (S42) Polyclonal Antibody



Western blot analysis of lysates from Jurkat cells, using PAR1 (Cleaved-Ser42) Antibody. The lane on the right is blocked with the synthesized peptide.

## | Contact information

Orders: order.cn@immunoway.com  
Support: support.cn@immunoway.com  
Telephone: 400-8787-807(China)  
Website: <http://www.immunoway.com.cn>  
Address: 2200 Ringwood Ave San Jose, CA 95131 USA



Please scan the QR code  
to access additional  
product information:

**Cleaved Thrombin  
Receptor (Ser42)  
Rabbit pAb**

---

For Research Use Only. Not for Use in Diagnostic Procedures.

[Antibody](#) | [ELISA Kits](#) | [Protein](#) | [Reagents](#)