

Cleaved PARP-1 (Asp214) Rabbit pAb

CatalogNo: YC0101 **Orthogonal Validated** 

Key Features

Host Species

- Rabbit

Reactivity

- Human, Mouse

Applications

- WB, IHC, IF, ELISA

MW

- 24kD (Observed)

Isotype

- IgG

Storage

Storage* -15°C to -25°C/1 year (Do not lower than -25°C)

Formulation Liquid in PBS containing 50% glycerol, 0.5% BSA and 0.02% sodium azide.

Recommended Dilution Ratios

WB 1:500-2000

IF 1:50-300

IHC 1:50-300

ELISA 1:5000-20000

Basic Information

Clonality Polyclonal

Immunogen Information

Immunogen The antiserum was produced against synthesized peptide derived from human PARP. AA range:165-214

Specificity Cleaved-PARP-1 (D214) Polyclonal Antibody detects endogenous levels of fragment of activated PARP-1 protein resulting from cleavage adjacent to D214.

Target Information

Gene name PARP1

Protein Name Poly [ADP-ribose] polymerase 1

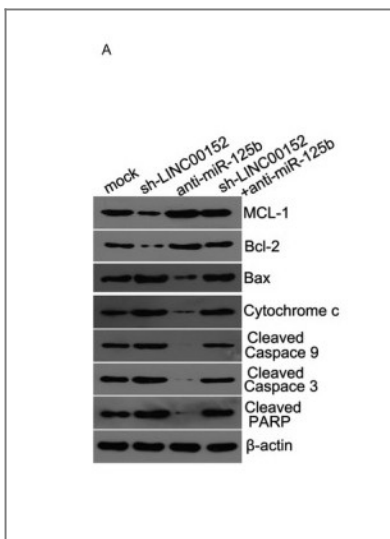
Organism	Gene ID	UniProt ID
Human	142;	P09874;
Mouse		P11103;

Cellular Localization Nucleus . Nucleus , nucleolus . Chromosome . Localizes to sites of DNA damage . .

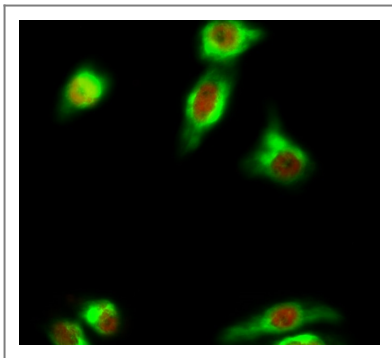
Tissue specificity Brain ,Colon carcinoma ,Fibroblast ,Lung ,Ovarian carcinoma ,Skin ,

Function Catalytic activity:NAD (+) + (ADP-D-ribosyl) (n) -acceptor = nicotinamide + (ADP-D-ribosyl) (n+1) -acceptor. ,Function:Involved in the base excision repair (BER) pathway , by catalyzing the poly (ADP-ribosyl) ation of a limited number of acceptor proteins involved in chromatin architecture and in DNA metabolism. This modification follows DNA damages and appears as an obligatory step in a detection/signaling pathway leading to the reparation of DNA strand breaks. ,miscellaneous:The ADP-D-ribosyl group of NAD (+) is transferred to an acceptor carboxyl group on a histone or the enzyme itself , and further ADP-ribosyl groups are transferred to the 2'-position of the terminal adenosine moiety , building up a polymer with an average chain length of 20-30 units. ,PTM:Phosphorylated by PRKDC. Phosphorylated upon DNA damage , probably by ATM or ATR. ,PTM:Poly-ADP-ribosylated by PARP2. ,similarity:Contains 1 BRCT domain. ,similarity:Contains 1 PARP alpha-helical domain. ,similarity:Contains 1 PARP catalytic domain. ,similarity:Contains 2 PARP-type zinc fingers. ,subunit:Component of a base excision repair (BER) complex , containing at least XRCC1 , PARP2 , POLB and LIG3. Homo- and heterodimer with PARP2. Interacts with PARP3 , APTX and SRY. The SWAP complex consists of NPM1 , NCL , PARP1 and SWAP70. Interacts with TIAM2 and ZNF423. ,

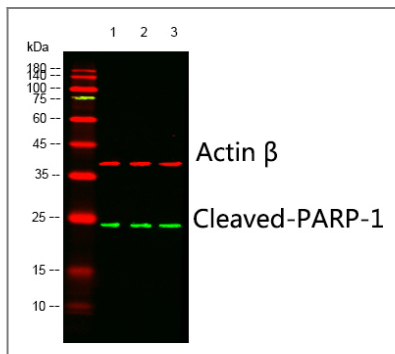
Validation Data



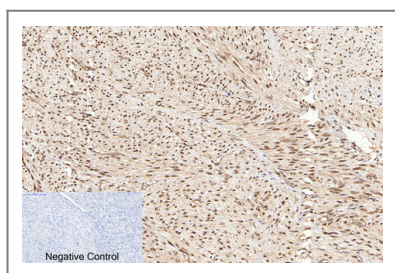
Chen, Puxiang, et al. "Long noncoding RNA LINC00152 promotes cell proliferation through competitively binding endogenous miR-125b with MCL-1 by regulating mitochondrial apoptosis pathways in ovarian cancer." *Cancer medicine* 7.9 (2018): 4530-4541.



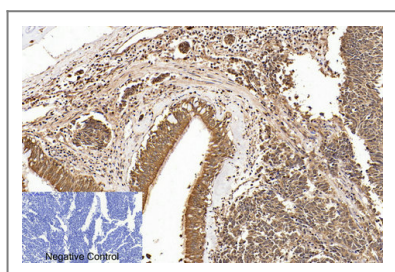
Immunofluorescence analysis of HeLa cell. 1, mouse Tubulin Antibody YM3505 (green) was diluted at 1:200 (4°C overnight). Cleaved PARP-1 (Asp214) Rabbit pAb (green) was diluted at 1:200 (4°C overnight). 2, Goat Anti Rabbit Alexa Fluor 594 Catalog:RS3611 was diluted at 1:1000 (room temperature, 50min). Goat Anti Mouse Alexa Fluor 488 Catalog:RS3208 was diluted at 1:1000 (room temperature, 50min).



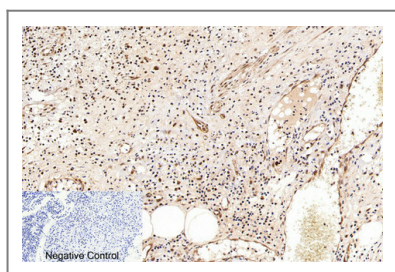
Western blot analysis of lysates from UV treated: 1) MCF-7, 2) 293T, 3) HELA cells, (Green) primary antibody was diluted at 1:1000, 4°C over night, Dylight 800 secondary antibody (Immunoway:RS23920) was diluted at 1:10000, 37° 1hour. (Red) Actin β Monoclonal Antibody (5B7) (Immunoway:YM3028) antibody was diluted at 1:5000 as loading control, 4°C over night, Dylight 680 secondary antibody (Immunoway:RS23710) was diluted at 1:10000, 37° 1hour.



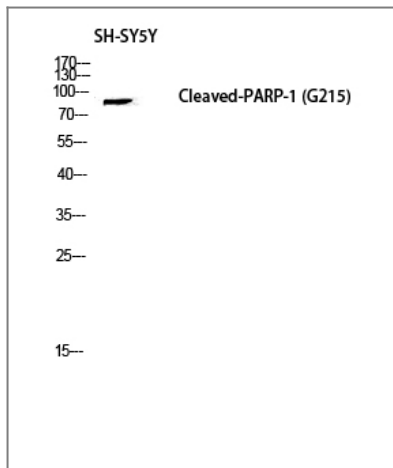
Immunohistochemical analysis of paraffin-embedded Human-uterus-cancer tissue. 1, Cleaved-PARP-1 (D214) Polyclonal Antibody was diluted at 1:200 (4°C overnight). 2, Sodium citrate pH 6.0 was used for antibody retrieval (>98°C, 20min). 3, Secondary antibody was diluted at 1:200 (room temperature, 30min). Negative control was used by secondary antibody only.



Immunohistochemical analysis of paraffin-embedded Human-lung-cancer tissue. 1, Cleaved-PARP-1 (D214) Polyclonal Antibody was diluted at 1:200 (4°C overnight). 2, Sodium citrate pH 6.0 was used for antibody retrieval (>98°C, 20min). 3, Secondary antibody was diluted at 1:200 (room temperature, 30min). Negative control was used by secondary antibody only.



Immunohistochemical analysis of paraffin-embedded Human-Appendix tissue. 1, Cleaved-PARP-1 (D214) Polyclonal Antibody was diluted at 1:200 (4°C overnight). 2, Sodium citrate pH 6.0 was used for antibody retrieval (>98°C, 20min). 3, Secondary antibody was diluted at 1:200 (room temperature, 30min). Negative control was used by secondary antibody only.



Western blot analysis of SH-SY5Y lysis using Cleaved-PARP-1 (D214) antibody. Antibody was diluted at 1:2000

Contact information

Orders: order.cn@immunoway.com
Support: support.cn@immunoway.com
Telephone: 400-8787-807(China)
Website: <http://www.immunoway.com.cn>
Address: 2200 Ringwood Ave San Jose, CA 95131 USA



Please scan the QR code to access additional product information:
Cleaved PARP-1 (Asp214) Rabbit pAb

For Research Use Only. Not for Use in Diagnostic Procedures.

[Antibody](#) | [ELISA Kits](#) | [Protein](#) | [Reagents](#)