

Cleaved MMP-1 22k (Phe100) Rabbit pAb

CatalogNo: YC0099

Orthogonal Validated 

Key Features

Host Species

- Rabbit

Reactivity

- Human,Rat

Applications

- WB,ELISA

MW

- 19kD (Observed)

Isotype

- IgG

Recommended Dilution Ratios

WB 1:500-1:2000**ELISA 1:10000****Not yet tested in other applications.**

Storage

Storage*

-15°C to -25°C/1 year(Do not lower than -25°C)

Formulation

Liquid in PBS containing 50% glycerol, 0.5% BSA and 0.02% sodium azide.

Basic Information

Clonality

Polyclonal

Immunogen Information

Immunogen

The antiserum was produced against synthesized peptide derived from human MMP1. AA range:81-130

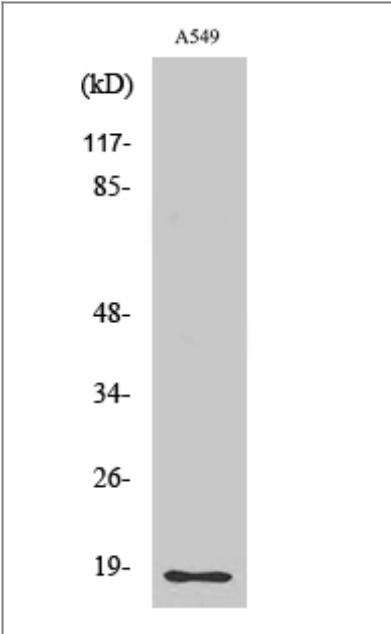
Specificity

Cleaved-MMP-1 22k (F100) Polyclonal Antibody detects endogenous levels of fragment of activated MMP-1 22k protein resulting from cleavage adjacent to F100.

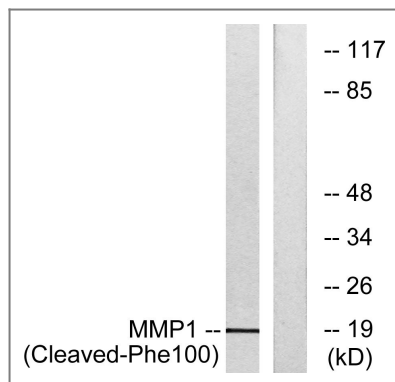
Target Information

Gene name	MMP1		
Protein Name	Interstitial collagenase		
	Organism	Gene ID	UniProt ID
	Human	4312;	P03956;
Cellular Localization	Secreted, extracellular space, extracellular matrix .		
Tissue specificity	Fibroblast,Ovary,Synovial cell,Synovial membrane,Thyroid,		
Function	<p>Catalytic activity: Cleavage of the triple helix of collagen at about three-quarters of the length of the molecule from the N-terminus, at 775-Gly-Ile-776 in the alpha-1(I) chain. Cleaves synthetic substrates and alpha-macroglobulins at bonds where P1' is a hydrophobic residue., cofactor: Binds 2 zinc ions per subunit., cofactor: Binds 4 calcium ions per subunit., Domain: The conserved cysteine present in the cysteine-switch motif binds the catalytic zinc ion, thus inhibiting the enzyme. The dissociation of the cysteine from the zinc ion upon the activation-peptide release activates the enzyme., Domain: There are two distinct domains in this protein; the catalytic N-terminal, and the C-terminal which is involved in substrate specificity and in binding TIMP (tissue inhibitor of metalloproteinases)., enzyme regulation: Can be activated without removal of the activation peptide., Function: Cleaves collagens of types I, II, and III at one site in the helical domain. Also cleaves collagens of types VII and X. In case of HIV infection, interacts and cleaves the secreted viral Tat protein, leading to a decrease in neuronal Tat's mediated neurotoxicity., online information: Collagenase entry, PTM: Undergoes autolytic cleavage to two major forms (22 kDa and 27 kDa). A minor form (25 kDa) is the glycosylated form of the 22 kDa form. The 27 kDa form has no activity while the 22/25 kDa form can act as activator for collagenase., similarity: Belongs to the peptidase M10A family., similarity: Contains 4 hemopexin-like domains., subunit: Interacts with HIV-1 Tat.,</p>		

Validation Data



Western Blot analysis of various cells using Cleaved-MMP-1 22k (F100) Polyclonal Antibody



Western blot analysis of lysates from A549 cells, treated with etoposide 25uM 24h, using MMP1 (Cleaved-Phe100) Antibody. The lane on the right is blocked with the synthesized peptide.

Contact information

Orders: order.cn@immunoway.com
 Support: support.cn@immunoway.com
 Telephone: 400-8787-807(China)
 Website: <http://www.immunoway.com.cn>
 Address: 2200 Ringwood Ave San Jose, CA 95131 USA



Please scan the QR code to access additional product information:
Cleaved MMP-1 22k (Phe100) Rabbit pAb

For Research Use Only. Not for Use in Diagnostic Procedures.

[Antibody](#) | [ELISA Kits](#) | [Protein](#) | [Reagents](#)