

Cleaved Integrin α V HC (Lys889) Rabbit pAb

CatalogNo: YC0092 **Orthogonal Validated** 

Key Features

Host Species

- Rabbit

Reactivity

- Human, Mouse, Rat

Applications

- WB, ELISA

MW

- 95kD (Observed)

Isotype

- IgG

Storage

Storage* -15°C to -25°C/1 year (Do not lower than -25°C)

Formulation Liquid in PBS containing 50% glycerol, 0.5% BSA and 0.02% sodium azide.

Recommended Dilution Ratios

WB 1:500-1:2000

ELISA 1:10000

Not yet tested in other applications.

Basic Information

Clonality Polyclonal

Immunogen Information

Immunogen The antiserum was produced against synthesized peptide derived from human ITGAV. AA range: 840-889

Specificity Cleaved-Integrin α V HC (K889) Polyclonal Antibody detects endogenous levels of fragment of activated Integrin α V HC protein resulting from cleavage adjacent to K889.

Target Information

Gene name ITGAV MSK8 VNRA

Protein Name Integrin alpha-V

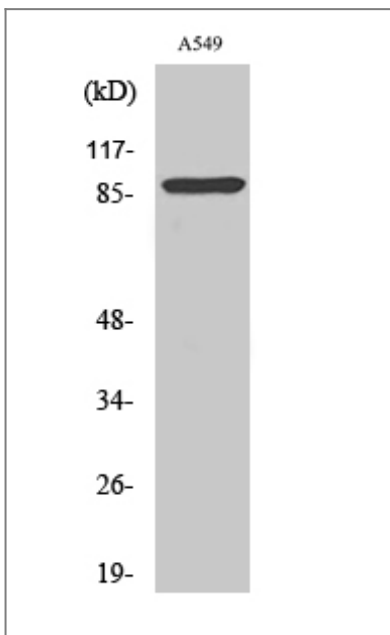
Organism	Gene ID	UniProt ID
Human	3685 ;	P06756 ;
Mouse	16410 ;	P43406 ;

Cellular Localization Cell membrane; Single-pass type I membrane protein. Cell junction, focal adhesion .

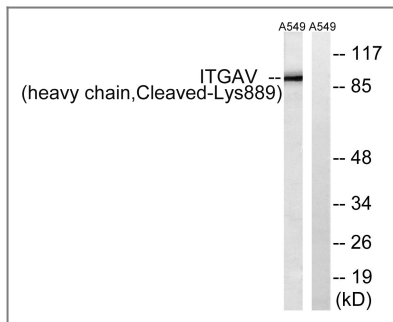
Tissue specificity Aortic endothelium,Liver,Pooled,Testis,

Function Function:The alpha-V integrins are receptors for vitronectin, cytotactin, fibronectin, fibrinogen, laminin, matrix metalloproteinase-2, osteopontin, osteomodulin, prothrombin, thrombospondin and vWF. They recognize the sequence R-G-D in a wide array of ligands. In case of HIV-1 infection, the interaction with extracellular viral Tat protein seems to enhance angiogenesis in Kaposi's sarcoma lesions.,similarity:Belongs to the integrin alpha chain family.,similarity:Contains 7 FG-GAP repeats.,subunit:Heterodimer of an alpha and a beta subunit. The alpha subunit is composed of an heavy and a light chain linked by a disulfide bond. Alpha-V associates with either beta-1, beta-3, beta-5, beta-6 or beta-8 subunit. Interacts with HIV-1 Tat. Alpha-V/beta-6 binds to foot-and-mouth disease virus (FMDV) VP1 protein and acts as a receptor for this virus (By similarity). Alpha-V/beta-6 binds to coxsackievirus A9 and coxsackievirus B1 capsid proteins and acts as a receptor for these viruses.,

Validation Data



Western Blot analysis of various cells using Cleaved-Integrin α V HC (K889) Polyclonal Antibody



Western blot analysis of lysates from A549 cells, treated with etoposide 25uM 1h, using ITGAV (heavy chain,Cleaved-Lys889) Antibody. The lane on the right is blocked with the synthesized peptide.

Contact information

Orders: order.cn@immunoway.com
Support: support.cn@immunoway.com
Telephone: 400-8787-807(China)
Website: <http://www.immunoway.com.cn>
Address: 2200 Ringwood Ave San Jose, CA 95131 USA



Please scan the QR code to access additional product information:
Cleaved Integrin α V HC (Lys889) Rabbit pAb

For Research Use Only. Not for Use in Diagnostic Procedures.

[Antibody](#) | [ELISA Kits](#) | [Protein](#) | [Reagents](#)