

Cleaved Integrin $\alpha 5$ LC (Glu895) Rabbit pAb

CatalogNo: YC0089 Orthogonal Validated 

Key Features

Host Species

- Rabbit

Reactivity

- Human, Mouse, Rat

Applications

- WB, ELISA

MW

- 18kD (Observed)

Isotype

- IgG

Storage

Storage* -15°C to -25°C/1 year (Do not lower than -25°C)

Formulation Liquid in PBS containing 50% glycerol, 0.5% BSA and 0.02% sodium azide.

Recommended Dilution Ratios

WB 1:500-1:2000

ELISA 1:20000

Not yet tested in other applications.

Basic Information

Clonality Polyclonal

Immunogen Information

Immunogen The antiserum was produced against synthesized peptide derived from human ITGA5. AA range: 876-925

Specificity Cleaved-Integrin $\alpha 5$ LC (E895) Polyclonal Antibody detects endogenous levels of fragment of activated Integrin $\alpha 5$ LC protein resulting from cleavage adjacent to E895.

Target Information

Gene name ITGA5

Protein Name Integrin alpha-5

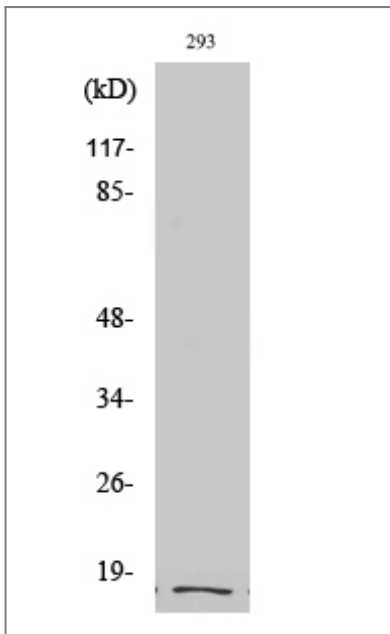
Organism	Gene ID	UniProt ID
Human	3678 ;	P08648 ;
Mouse		P11688 ;

Cellular Localization Membrane; Single-pass type I membrane protein. Cell junction, focal adhesion . Cell surface .

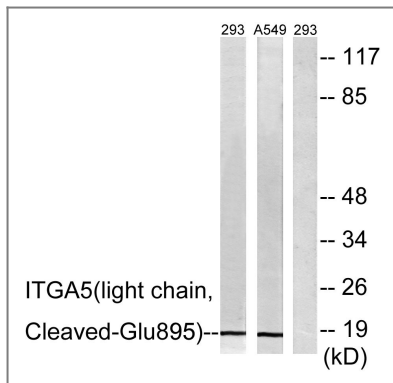
Tissue specificity Liver,Placenta,

Function Function: Integrin alpha-5/beta-1 is a receptor for fibronectin and fibrinogen. It recognizes the sequence R-G-D in its ligands. In case of HIV-1 infection, the interaction with extracellular viral Tat protein seems to enhance angiogenesis in Kaposi's sarcoma lesions.,similarity: Belongs to the integrin alpha chain family.,similarity: Contains 7 FG-GAP repeats.,subunit: Heterodimer of an alpha and a beta subunit. The alpha subunit is composed of an heavy and a light chain linked by a disulfide bond. Alpha-5 associates with beta-1. Interacts with HPS5 and NISCH. Interacts with HIV-1 Tat. Interacts with RAB21.,

Validation Data



Western Blot analysis of various cells using Cleaved-Integrin α 5 LC (E895) Polyclonal Antibody



Western blot analysis of lysates from 293 and A549 cells, treated with etoposide 25uM 1h, using ITGA5 (light chain,Cleaved-Glu895) Antibody. The lane on the right is blocked with the synthesized peptide.

Contact information

Orders: order.cn@immunoway.com
 Support: support.cn@immunoway.com
 Telephone: 400-8787-807(China)
 Website: <http://www.immunoway.com.cn>
 Address: 2200 Ringwood Ave San Jose, CA 95131 USA



Please scan the QR code to access additional product information:

**Cleaved Integrin α 5
LC (Glu895) Rabbit
pAb**

For Research Use Only. Not for Use in Diagnostic Procedures.

[Antibody](#) | [ELISA Kits](#) | [Protein](#) | [Reagents](#)