

Cleaved Integrin $\alpha 5$ HC (Phe42) Rabbit pAb

CatalogNo: YC0088 Orthogonal Validated 

Key Features

Host Species

- Rabbit

Reactivity

- Human, Mouse

Applications

- WB, ELISA

MW

- 92kD (Observed)

Isotype

- IgG

Storage

Storage* -15°C to -25°C/1 year (Do not lower than -25°C)

Formulation Liquid in PBS containing 50% glycerol, 0.5% BSA and 0.02% sodium azide.

Recommended Dilution Ratios

WB 1:500-1:2000

ELISA 1:10000

Not yet tested in other applications.

Basic Information

Clonality Polyclonal

Immunogen Information

Immunogen The antiserum was produced against synthesized peptide derived from human ITGA5. AA range:23-72

Specificity Cleaved-Integrin $\alpha 5$ HC (F42) Polyclonal Antibody detects endogenous levels of fragment of activated Integrin $\alpha 5$ HC protein resulting from cleavage adjacent to F42.

Target Information

Gene name ITGA5

Protein Name Integrin alpha-5

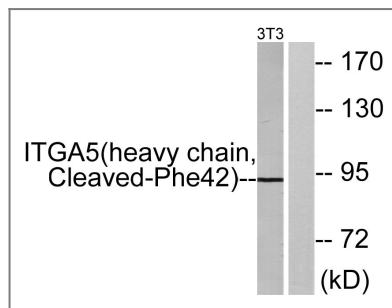
Organism	Gene ID	UniProt ID
Human	3678;	P08648;
Mouse	16402;	P11688;

Cellular Localization Membrane; Single-pass type I membrane protein. Cell junction, focal adhesion . Cell surface .

Tissue specificity Liver,Placenta,

Function Function: Integrin alpha-5/beta-1 is a receptor for fibronectin and fibrinogen. It recognizes the sequence R-G-D in its ligands. In case of HIV-1 infection, the interaction with extracellular viral Tat protein seems to enhance angiogenesis in Kaposi's sarcoma lesions.,similarity:Belongs to the integrin alpha chain family.,similarity:Contains 7 FG-GAP repeats.,subunit:Heterodimer of an alpha and a beta subunit. The alpha subunit is composed of an heavy and a light chain linked by a disulfide bond. Alpha-5 associates with beta-1. Interacts with HPS5 and NISCH. Interacts with HIV-1 Tat. Interacts with RAB21.,

Validation Data



Western blot analysis of lysates from NIH/3T3 cells, treated with etoposide 25uM 24h, using ITGA5 (heavy chain, Cleaved-Phe42) Antibody. The lane on the right is blocked with the synthesized peptide.

Contact information

Orders: order.cn@immunoway.com
Support: support.cn@immunoway.com
Telephone: 400-8787-807(China)
Website: <http://www.immunoway.com.cn>
Address: 2200 Ringwood Ave San Jose, CA 95131 USA



Please scan the QR code to access additional product information:
Cleaved Integrin α 5 HC (Phe42) Rabbit pAb