

Cleaved Factor X/ Factor X LC (Ala41) Rabbit pAb

CatalogNo: YC0082

Orthogonal Validated 

Key Features

Host Species

- Rabbit

Reactivity

- Human, Mouse, Rat

Applications

- WB, ELISA

MW

- 50kD (Observed)

Isotype

- IgG

Recommended Dilution Ratios

WB 1:500-1:2000**ELISA 1:20000****Not yet tested in other applications.**

Storage

Storage* -15°C to -25°C/1 year (Do not lower than -25°C)**Formulation** Liquid in PBS containing 50% glycerol, 0.5% BSA and 0.02% sodium azide.

Basic Information

Clonality Polyclonal

Immunogen Information

Immunogen The antiserum was produced against synthesized peptide derived from human FA10. AA range: 22-71**Specificity** Cleaved-Factor X/ Factor X LC (A41) Polyclonal Antibody detects endogenous levels of fragment of activated Factor X/ Factor X LC protein resulting from cleavage adjacent to A41.

Target Information

Gene name F10

Protein Name Coagulation factor X

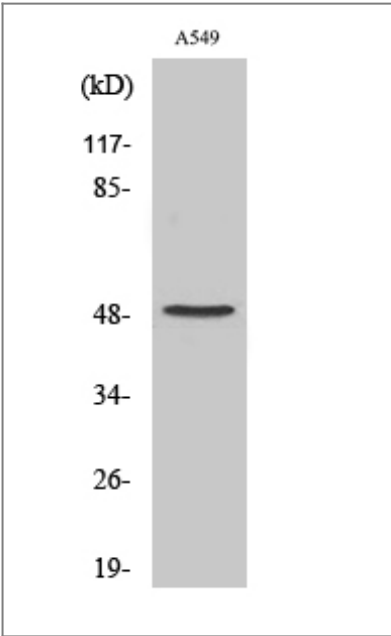
Organism	Gene ID	UniProt ID
Human	2159 ;	P00742 ;
Mouse		O88947 ;

Cellular Localization Secreted.

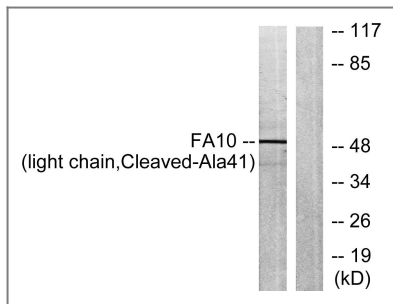
Tissue specificity Plasma; synthesized in the liver.

Function Catalytic activity: Selective cleavage of Arg-|-Thr and then Arg-|-Ile bonds in prothrombin to form thrombin., Function: Factor Xa is a vitamin K-dependent glycoprotein that converts prothrombin to thrombin in the presence of factor Va, calcium and phospholipid during blood clotting., online information: Factor X entry, PTM: N- and O-glycosylated., PTM: The activation peptide is cleaved by factor IXa (in the intrinsic pathway), or by factor VIIa (in the extrinsic pathway)., PTM: The iron and 2-oxoglutarate dependent 3-hydroxylation of aspartate and asparagine is (R) stereospecific within EGF domains., PTM: The vitamin K-dependent, enzymatic carboxylation of some glutamate residues allows the modified protein to bind calcium., similarity: Belongs to the peptidase S1 family., similarity: Contains 1 Gla (gamma-carboxy-glutamate) domain., similarity: Contains 1 peptidase S1 domain., similarity: Contains 2 EGF-like domains., subunit: The two chains are formed from a single-chain precursor by the excision of two Arg residues and are held together by 1 or more disulfide bonds., tissue specificity: Plasma; synthesized in the liver.,

Validation Data



Western Blot analysis of various cells using Cleaved-Factor X/ Factor X LC (A41) Polyclonal Antibody



Western blot analysis of lysates from A549 cells, treated with etoposide 24uM 24h, using FA10 (light chain,Cleaved-Ala41) Antibody. The lane on the right is blocked with the synthesized peptide.

Contact information

Orders: order.cn@immunoway.com
 Support: support.cn@immunoway.com
 Telephone: 400-8787-807(China)
 Website: <http://www.immunoway.com.cn>
 Address: 2200 Ringwood Ave San Jose, CA 95131 USA



Please scan the QR code to access additional product information:
**Cleaved Factor X/
 Factor X LC (Ala41)
 Rabbit pAb**

For Research Use Only. Not for Use in Diagnostic Procedures.

[Antibody](#) | [ELISA Kits](#) | [Protein](#) | [Reagents](#)