

## Cleaved Factor B Bb (Lys260) Rabbit pAb

CatalogNo: YC0080 Orthogonal Validated 

### Key Features

#### Host Species

- Rabbit

#### Reactivity

- Human, Mouse

#### Applications

- WB, ELISA

#### MW

- 57kD, 85kD (Observed)

#### Isotype

- IgG

### Storage

**Storage\*** -15°C to -25°C/1 year (Do not lower than -25°C)

**Formulation** Liquid in PBS containing 50% glycerol, 0.5% BSA and 0.02% sodium azide.

### Recommended Dilution Ratios

**WB 1:500-1:2000**

**ELISA 1:20000**

**Not yet tested in other applications.**

### Basic Information

**Clonality** Polyclonal

### Immunogen Information

**Immunogen** The antiserum was produced against synthesized peptide derived from human CFAB Bb. AA range: 241-290

**Specificity** Cleaved-Factor B Bb (K260) Polyclonal Antibody detects endogenous levels of fragment of activated Factor B Bb protein resulting from cleavage adjacent to K260.

### Target Information

**Gene name** CFB

**Protein Name** Complement factor B

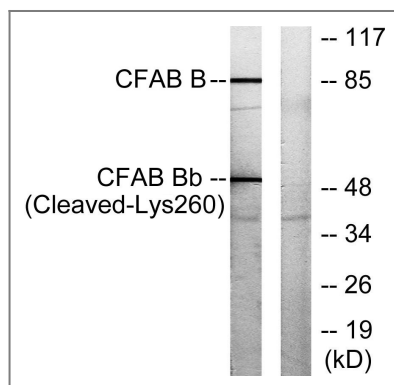
Organism	Gene ID	UniProt ID
Human	<a href="#">629</a> ;	<a href="#">P00751</a> ;
Mouse		<a href="#">P04186</a> ;

**Cellular Localization** Secreted.

**Tissue specificity** Blood,Colon,Liver,Plasma,

**Function** Catalytic activity:Cleavage of Arg-|-Ser bond in complement component C3 alpha-chain to yield C3a and C3b, and Arg-|-Xaa bond in complement component C5 alpha-chain to yield C5a and C5b.,Function:Factor B which is part of the alternate pathway of the complement system is cleaved by factor D into 2 fragments: Ba and Bb. Bb, a serine protease, then combines with complement factor 3b to generate the C3 or C5 convertase. It has also been implicated in proliferation and differentiation of preactivated B-lymphocytes, rapid spreading of peripheral blood monocytes, stimulation of lymphocyte blastogenesis and lysis of erythrocytes. Ba inhibits the proliferation of preactivated B-lymphocytes.,polymorphism:Two major variants, F and S, and 2 minor variants, as well as at least 14 very rare variants, have been identified. The variants His-9 and Gln-32 are associated with a reduced risk of age-related macular degeneration (ARMD) [MIM:603075]. ARMD is a multifactorial eye disease and the most common cause of irreversible vision loss in the developed world.,similarity:Belongs to the peptidase S1 family.,similarity:Contains 1 peptidase S1 domain.,similarity:Contains 1 VWFA domain.,similarity:Contains 3 Sushi (CCP/SCR) domains.,subunit:Monomer.,

## Validation Data



Western blot analysis of lysates from K562 cells, treated with etoposide 25uM 1h, using CFAB Bb (Cleaved-Lys260) Antibody. The lane on the right is blocked with the synthesized peptide.

## Contact information

Orders: order.cn@immunoway.com  
Support: support.cn@immunoway.com  
Telephone: 400-8787-807(China)  
Website: <http://www.immunoway.com.cn>  
Address: 2200 Ringwood Ave San Jose, CA 95131 USA



Please scan the QR code  
to access additional  
product information:  
**Cleaved Factor B Bb  
(Lys260) Rabbit pAb**

---

For Research Use Only. Not for Use in Diagnostic Procedures.

[Antibody](#) | [ELISA Kits](#) | [Protein](#) | [Reagents](#)