

Cleaved MMP-27 (Tyr99) Rabbit pAb

CatalogNo: YC0065

Orthogonal Validated 

Key Features

Host Species

- Rabbit

Reactivity

- Human, Monkey

Applications

- WB, ELISA

MW

- 48kD (Observed)

Isotype

- IgG

Recommended Dilution Ratios

WB 1:500-1:2000**ELISA 1:10000****Not yet tested in other applications.**

Storage

Storage* -15°C to -25°C/1 year(Do not lower than -25°C)**Formulation** Liquid in PBS containing 50% glycerol, 0.5% BSA and 0.02% sodium azide.

Basic Information

Clonality Polyclonal

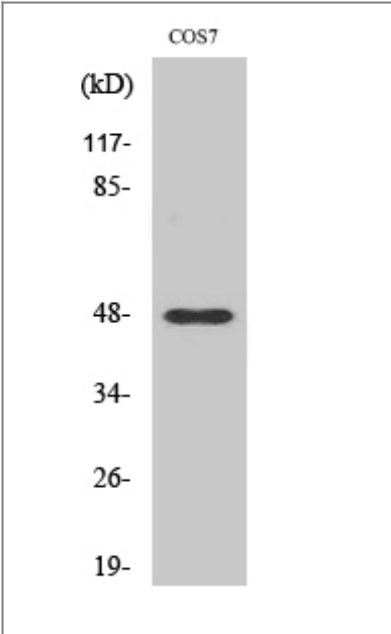
Immunogen Information

Immunogen The antiserum was produced against synthesized peptide derived from human MMP27. AA range:80-129**Specificity** Cleaved-MMP-27 (Y99) Polyclonal Antibody detects endogenous levels of fragment of activated MMP-27 protein resulting from cleavage adjacent to Y99.

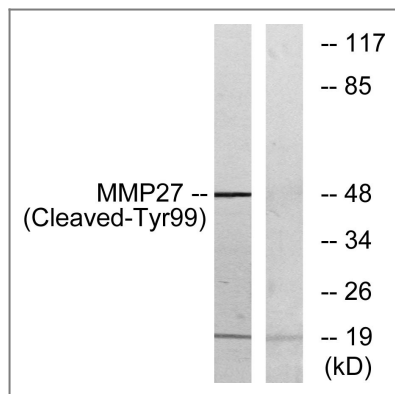
Target Information

Gene name	MMP27		
Protein Name	Matrix metalloproteinase-27		
	Organism	Gene ID	UniProt ID
	Human	64066 ;	Q9H306 ;
Cellular Localization	Endoplasmic reticulum membrane; Peripheral membrane protein . Retained in the endoplasmic reticulum. .		
Tissue specificity	Expressed in B-cells (PubMed:14506071). Expressed in a subset of endometrial macrophages related to menstruation and in ovarian and peritoneal endometriotic lesions (at protein level)(PubMed:24810263).		
Function	cofactor: Binds 2 zinc ions per subunit., cofactor: Binds 4 calcium ions per subunit., Domain: The conserved cysteine present in the cysteine-switch motif binds the catalytic zinc ion, thus inhibiting the enzyme. The dissociation of the cysteine from the zinc ion upon the activation-peptide release activates the enzyme., Function: Matrix metalloproteinases degrade protein components of the extracellular matrix such as fibronectin, laminin, gelatins and/or collagens., similarity: Belongs to the peptidase M10A family., similarity: Contains 4 hemopexin-like domains., tissue specificity: Expressed in B-cells.,		

Validation Data



Western Blot analysis of various cells using Cleaved-MMP-27 (Y99) Polyclonal Antibody



Western blot analysis of lysates from COS7 cells, treated with etoposide 25uM 1h, using MMP27 (Cleaved-Tyr99) Antibody. The lane on the right is blocked with the synthesized peptide.

Contact information

Orders: order.cn@immunoway.com
 Support: support.cn@immunoway.com
 Telephone: 400-8787-807(China)
 Website: <http://www.immunoway.com.cn>
 Address: 2200 Ringwood Ave San Jose, CA 95131 USA



Please scan the QR code to access additional product information:
Cleaved MMP-27 (Tyr99) Rabbit pAb

For Research Use Only. Not for Use in Diagnostic Procedures.

[Antibody](#) | [ELISA Kits](#) | [Protein](#) | [Reagents](#)