

Cleaved MMP-15 (Tyr132) Rabbit pAb

CatalogNo: YC0062

Orthogonal Validated 

Key Features

Host Species

- Rabbit

Reactivity

- Human, Monkey

Applications

- WB, ELISA

MW

- 61kD (Observed)

Isotype

- IgG

Recommended Dilution Ratios

WB 1:500-1:2000**ELISA 1:10000****Not yet tested in other applications.**

Storage

Storage* -15°C to -25°C/1 year(Do not lower than -25°C)**Formulation** Liquid in PBS containing 50% glycerol, 0.5% BSA and 0.02% sodium azide.

Basic Information

Clonality Polyclonal

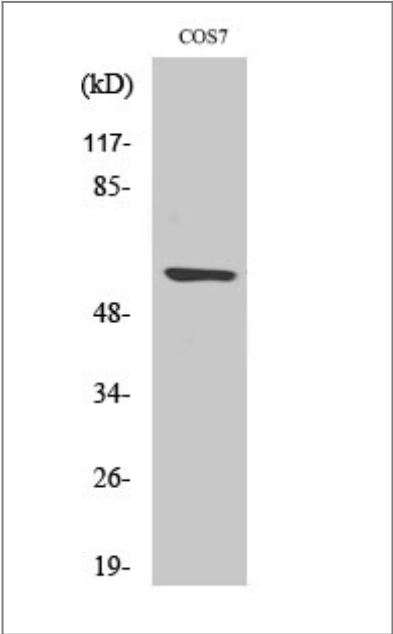
Immunogen Information

Immunogen The antiserum was produced against synthesized peptide derived from human MMP15. AA range:113-162**Specificity** Cleaved-MMP-15 (Y132) Polyclonal Antibody detects endogenous levels of fragment of activated MMP-15 protein resulting from cleavage adjacent to Y132.

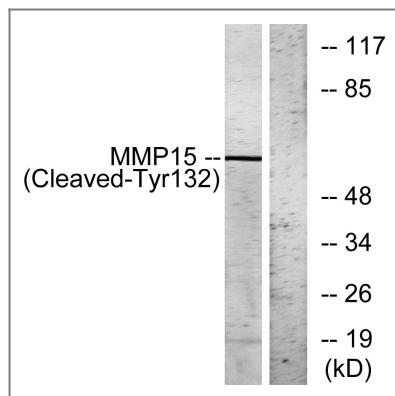
Target Information

Gene name	MMP15									
Protein Name	Matrix metalloproteinase-15									
	<table><tr><th>Organism</th><th>Gene ID</th><th>UniProt ID</th></tr><tr><td>Human</td><td>4324;</td><td>P51511;</td></tr><tr><td>Mouse</td><td></td><td>O54732;</td></tr></table>	Organism	Gene ID	UniProt ID	Human	4324 ;	P51511 ;	Mouse		O54732 ;
Organism	Gene ID	UniProt ID								
Human	4324 ;	P51511 ;								
Mouse		O54732 ;								
Cellular Localization	Membrane ; Single-pass type I membrane protein ; Extracellular side .									
Tissue specificity	Appeared to be synthesized preferentially in liver, placenta, testis, colon and intestine. Substantial amounts are also detected in pancreas, kidney, lung, heart and skeletal muscle.									
Function	cofactor: Binds 1 zinc ion per subunit.,cofactor: Calcium.,Domain: The conserved cysteine present in the cysteine-switch motif binds the catalytic zinc ion, thus inhibiting the enzyme. The dissociation of the cysteine from the zinc ion upon the activation-peptide release activates the enzyme.,Function: Endopeptidase that degrades various components of the extracellular matrix. May activate progelatinase A.,PTM: The precursor is cleaved by a furin endopeptidase.,similarity: Belongs to the peptidase M10A family.,similarity: Contains 4 hemopexin-like domains.,tissue specificity: Appeared to be synthesized preferentially in liver, placenta, testis, colon and intestine. Substantial amounts are also detected in pancreas, kidney, lung, heart and skeletal muscle.,									

| Validation Data



Western Blot analysis of various cells using Cleaved-MMP-15 (Y132) Polyclonal Antibody



Western blot analysis of lysates from COS7 cells, treated with etoposide 25uM 1h, using MMP15 (Cleaved-Tyr132) Antibody. The lane on the right is blocked with the synthesized peptide.

Contact information

Orders: order.cn@immunoway.com
Support: support.cn@immunoway.com
Telephone: 400-8787-807(China)
Website: <http://www.immunoway.com.cn>
Address: 2200 Ringwood Ave San Jose, CA 95131 USA



Please scan the QR code to access additional product information:
Cleaved MMP-15 (Tyr132) Rabbit pAb

For Research Use Only. Not for Use in Diagnostic Procedures.

[Antibody](#) | [ELISA Kits](#) | [Protein](#) | [Reagents](#)