

## Cleaved MMP-12 (Gly106) Rabbit pAb

CatalogNo: YC0060 Orthogonal Validated 

### Key Features

#### Host Species

- Rabbit

#### Reactivity

- Human, Mouse, Rat

#### Applications

- WB, ELISA

#### MW

- 42kD (Observed)

#### Isotype

- IgG

### Storage

**Storage\*** -15°C to -25°C/1 year (Do not lower than -25°C)

**Formulation** Liquid in PBS containing 50% glycerol, 0.5% BSA and 0.02% sodium azide.

### Recommended Dilution Ratios

**WB 1:500-1:2000**

**ELISA 1:20000**

**Not yet tested in other applications.**

### Basic Information

**Clonality** Polyclonal

### Immunogen Information

**Immunogen** The antiserum was produced against synthesized peptide derived from human MMP12. AA range:87-136

**Specificity** Cleaved-MMP-12 (G106) Polyclonal Antibody detects endogenous levels of fragment of activated MMP-12 protein resulting from cleavage adjacent to G106.

### Target Information

**Gene name** MMP12

**Protein Name** Macrophage metalloelastase

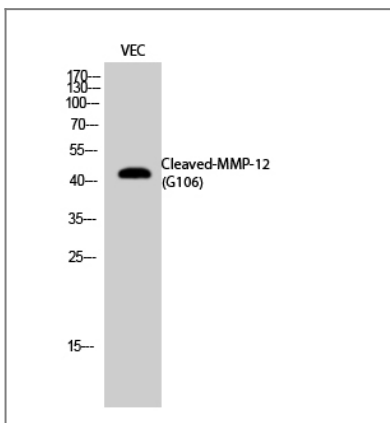
Organism	Gene ID	UniProt ID
Human	<a href="#">4321</a> ;	<a href="#">P39900</a> ;
Mouse		<a href="#">P34960</a> ;

**Cellular Localization** Secreted, extracellular space, extracellular matrix .

**Tissue specificity** Found in alveolar macrophages but not in peripheral blood monocytes.

**Function** Catalytic activity:Hydrolysis of soluble and insoluble elastin. Specific cleavages are also produced at 14-Ala-|-Leu-15 and 16-Tyr-|-Leu-17 in the B chain of insulin.,cofactor:Binds 2 zinc ions per subunit.,cofactor:Binds 4 calcium ions per subunit.,Domain:The conserved cysteine present in the cysteine-switch motif binds the catalytic zinc ion, thus inhibiting the enzyme. The dissociation of the cysteine from the zinc ion upon the activation-peptide release activates the enzyme.,Function:May be involved in tissue injury and remodeling. Has significant elastolytic activity. Can accept large and small amino acids at the P1' site, but has a preference for leucine. Aromatic or hydrophobic residues are preferred at the P1 site, with small hydrophobic residues (preferably alanine) occupying P3.,induction:By exposure to lipopolysaccharide. Inhibited by dexamethasone.,similarity:Belongs to the peptidase M10A family.,similarity:Contains 4 hemopexin-like domains.,tissue specificity:Found in alveolar macrophages but not in peripheral blood monocytes.,

## Validation Data



Western Blot analysis of VEC cells using Cleaved-MMP-12 (G106) Polyclonal Antibody diluted at 1:1000

## Contact information

Orders: order.cn@immunoway.com  
Support: support.cn@immunoway.com  
Telephone: 400-8787-807(China)  
Website: http://www.immunoway.com.cn  
Address: 2200 Ringwood Ave San Jose, CA 95131 USA



Please scan the QR code  
to access additional  
product information:  
**Cleaved MMP-12  
(Gly106) Rabbit pAb**

---

For Research Use Only. Not for Use in Diagnostic Procedures.

[Antibody](#) | [ELISA Kits](#) | [Protein](#) | [Reagents](#)