

Cleaved MMP-10 (Phe99) Rabbit pAb

CatalogNo: YC0059

Key Features

Host Species

- Rabbit

Reactivity

- Human, Mouse, Rat

Applications

- WB, ELISA

MW

- 43kD (Observed)

Isotype

- IgG

Recommended Dilution Ratios

WB 1:500-1:2000

ELISA 1:40000

Not yet tested in other applications.

Storage

Storage*

-15°C to -25°C/1 year (Do not lower than -25°C)

Formulation

Liquid in PBS containing 50% glycerol, 0.5% BSA and 0.02% sodium azide.

Basic Information

Clonality

Polyclonal

Immunogen Information

Immunogen

The antiserum was produced against synthesized peptide derived from human MMP10. AA range: 80-129

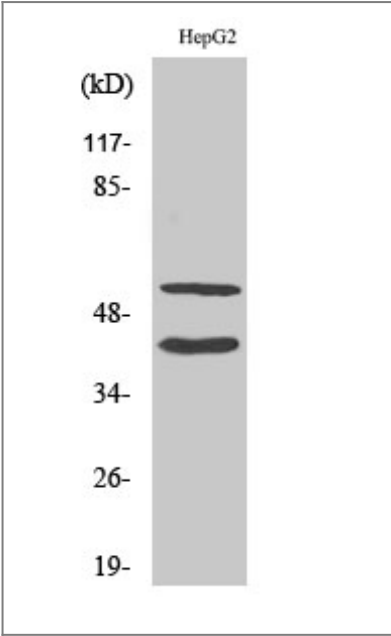
Specificity

Cleaved-MMP-10 (F99) Polyclonal Antibody detects endogenous levels of fragment of activated MMP-10 protein resulting from cleavage adjacent to F99.

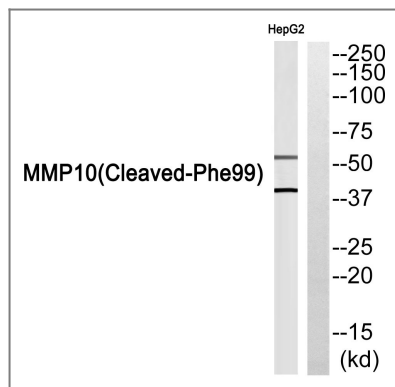
Target Information

Gene name	MMP10									
Protein Name	Stromelysin-2									
	<table><tr><th>Organism</th><th>Gene ID</th><th>UniProt ID</th></tr><tr><td>Human</td><td>4319;</td><td>P09238;</td></tr><tr><td>Mouse</td><td></td><td>O55123;</td></tr></table>	Organism	Gene ID	UniProt ID	Human	4319 ;	P09238 ;	Mouse		O55123 ;
Organism	Gene ID	UniProt ID								
Human	4319 ;	P09238 ;								
Mouse		O55123 ;								
Cellular Localization	Secreted, extracellular space, extracellular matrix .									
Tissue specificity	Coronary artery,Ovary,									
Function	Catalytic activity:Similar to stromelysin 1, but action on collagen types III, IV and V is weak.,cofactor:Binds 2 zinc ions per subunit.,cofactor:Calcium.,Domain:The conserved cysteine present in the cysteine-switch motif binds the catalytic zinc ion, thus inhibiting the enzyme. The dissociation of the cysteine from the zinc ion upon the activation-peptide release activates the enzyme.,Function:Can degrade fibronectin, gelatins of type I, III, IV, and V; weakly collagens III, IV, and V. Activates procollagenase.,similarity:Belongs to the peptidase M10A family.,similarity:Contains 4 hemopexin-like domains.,									

Validation Data



Western Blot analysis of HepG2 cells using Cleaved-MMP-10 (F99) Polyclonal Antibody diluted at 1:1000



Western blot analysis of MMP10 (Cleaved-Phe99) Antibody. The lane on the right is blocked with the MMP10 (Cleaved-Phe99) peptide.

Contact information

Orders: order.cn@immunoway.com
 Support: support.cn@immunoway.com
 Telephone: 400-8787-807(China)
 Website: <http://www.immunoway.com.cn>
 Address: 2200 Ringwood Ave San Jose, CA 95131 USA



Please scan the QR code to access additional product information:

Cleaved MMP-10 (Phe99) Rabbit pAb

For Research Use Only. Not for Use in Diagnostic Procedures.

[Antibody](#) | [ELISA Kits](#) | [Protein](#) | [Reagents](#)