

## Cleaved Cathepsin A 32k (Arg326) Rabbit pAb

CatalogNo: YC0034

Orthogonal Validated 

### Key Features

#### Host Species

- Rabbit

#### Reactivity

- Human, Mouse

#### Applications

- WB, ELISA

#### MW

- 33kD (Observed)

#### Isotype

- IgG

### Recommended Dilution Ratios

**WB 1:500-1:2000****ELISA 1:10000****Not yet tested in other applications.**

### Storage

**Storage\*** -15°C to -25°C/1 year (Do not lower than -25°C)**Formulation** Liquid in PBS containing 50% glycerol, 0.5% BSA and 0.02% sodium azide.

### Basic Information

**Clonality** Polyclonal

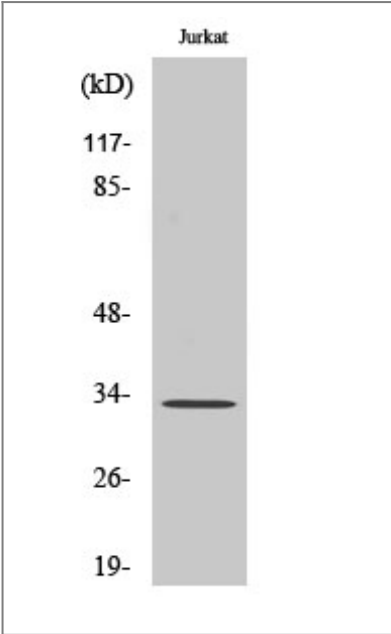
### Immunogen Information

**Immunogen** The antiserum was produced against synthesized peptide derived from human PPGB. AA range: 277-326**Specificity** Cleaved-Cathepsin A 32k (R326) Polyclonal Antibody detects endogenous levels of fragment of activated Cathepsin A 32k protein resulting from cleavage adjacent to R326.

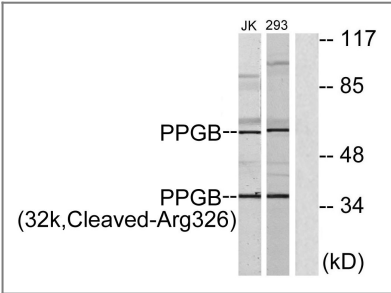
### Target Information

Gene name	CTSA PPGB		
Protein Name	Lysosomal protective protein		
	Organism	Gene ID	UniProt ID
	Human	<a href="#">5476</a> ;	<a href="#">P10619</a> ;
	Mouse	<a href="#">19025</a> ;	<a href="#">P16675</a> ;
Cellular Localization	Lysosome.		
Tissue specificity	Brain,Liver,Placenta,Platelet,Skin,Uterus,		
Function	Catalytic activity:Release of a C-terminal amino acid with broad specificity.,Disease:Defects in CTSA are the cause of galactosialidosis [MIM:256540]. It is an autosomal recessive disease.,Function:Protective protein appears to be essential for both the activity of beta-galactosidase and neuraminidase, it associates with these enzymes and exerts a protective function necessary for their stability and activity. This protein is also a carboxypeptidase and can deamidate tachykinins.,similarity:Belongs to the peptidase S10 family.,subunit:Heterodimer of a 32 kDa chain and a 20 kDa chain; disulfide-linked.,		

Validation Data



Western Blot analysis of various cells using Cleaved-Cathepsin A 32k (R326) Polyclonal Antibody



Western blot analysis of lysates from 293 and Jurkat cells, treated with etoposide 25uM 1h, using PPGB (32k,Cleaved-Arg326) Antibody. The lane on the right is blocked with the synthesized peptide.

## | Contact information

Orders: order.cn@immunoway.com  
Support: support.cn@immunoway.com  
Telephone: 400-8787-807(China)  
Website: <http://www.immunoway.com.cn>  
Address: 2200 Ringwood Ave San Jose, CA 95131 USA



Please scan the QR code  
to access additional  
product information:  
**Cleaved Cathepsin A  
32k (Arg326) Rabbit  
pAb**

---

For Research Use Only. Not for Use in Diagnostic Procedures.

[Antibody](#) | [ELISA Kits](#) | [Protein](#) | [Reagents](#)