

## Cleaved Caspase-2 p18 (Gly170) Rabbit pAb

CatalogNo: YC0024 **Orthogonal Validated** 

### Key Features

#### Host Species

- Rabbit

#### Reactivity

- Human, Mouse, Rat

#### Applications

- WB, ELISA

#### MW

- 18kD or 35kD (Observed)

#### Isotype

- IgG

### Storage

**Storage\*** -15°C to -25°C/1 year (Do not lower than -25°C)

**Formulation** Liquid in PBS containing 50% glycerol, 0.5% BSA and 0.02% sodium azide.

### Recommended Dilution Ratios

**WB 1:500-1:2000**

**ELISA 1:40000**

**Not yet tested in other applications.**

### Basic Information

**Clonality** Polyclonal

### Immunogen Information

**Immunogen** The antiserum was produced against synthesized peptide derived from human Caspase 2 p18 N-terminal. AA range: 151-200

**Specificity** Cleaved-Caspase-2 p18 (G170) Polyclonal Antibody detects endogenous levels of fragment of activated Caspase-2 p18 protein resulting from cleavage adjacent to G170.

### Target Information

**Gene name** CASP2

**Protein Name** Caspase2

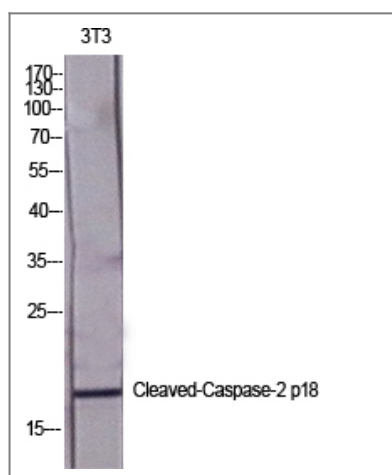
Organism	Gene ID	UniProt ID
Human	<a href="#">835</a> ;	<a href="#">P42575</a> ;
Mouse		<a href="#">P29594</a> ;

**Cellular Localization** nucleus,cytoplasm,mitochondrion,cytosol,membrane,

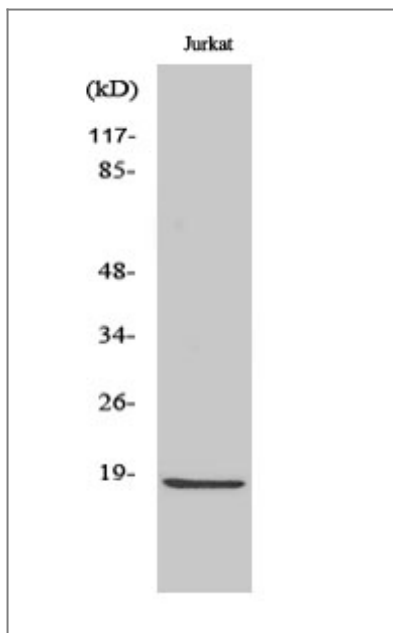
**Tissue specificity** Expressed at higher levels in the embryonic lung, liver and kidney than in the heart and brain. In adults, higher level expression is seen in the placenta, lung, kidney, and pancreas than in the heart, brain, liver and skeletal muscle.

**Function** Alternative products:Isoforms differ in the N- and C-termini,Catalytic activity:Strict requirement for an Asp residue at P1, with 316-asp being essential for proteolytic activity and has a preferred cleavage sequence of Val-Asp-Val-Ala-Asp-[-].,Function:Involved in the activation cascade of caspases responsible for apoptosis execution. Might function by either activating some proteins required for cell death or inactivating proteins necessary for cell survival.,PTM:The mature protease can process its own propeptide, but not that of other caspases.,similarity:Belongs to the peptidase C14A family.,similarity:Contains 1 CARD domain.,subunit:Heterotetramer that consists of two anti-parallel arranged heterodimers, each one formed by a p18 subunit and a p12 subunit. Interacts with LRDD.,tissue specificity:Expressed at higher levels in the embryonic lung, liver and kidney than in the heart and brain. In adults, higher level expression is seen in the placenta, lung, kidney, and pancreas than in the heart, brain, liver and skeletal muscle.,

## Validation Data



Western Blot analysis of various cells using Cleaved-Caspase-2 p18 (G170) Polyclonal Antibody diluted at 1:2000



Western Blot analysis of Jurkat cells using Cleaved-Caspase-2 p18 (G170) Polyclonal Antibody diluted at 1:2000

## Contact information

Orders: [order.cn@immunoway.com](mailto:order.cn@immunoway.com)  
Support: [support.cn@immunoway.com](mailto:support.cn@immunoway.com)  
Telephone: 400-8787-807(China)  
Website: <http://www.immunoway.com.cn>  
Address: 2200 Ringwood Ave San Jose, CA 95131 USA



Please scan the QR code to access additional product information:  
**Cleaved Caspase-2 p18 (Gly170) Rabbit pAb**

For Research Use Only. Not for Use in Diagnostic Procedures.

[Antibody](#) | [ELISA Kits](#) | [Protein](#) | [Reagents](#)