

Cleaved C1r HC (Arg463) Rabbit pAb

CatalogNo: YC0018

Key Features

Host Species

- Rabbit

Reactivity

- Human

Applications

- WB, ELISA

MW

- 51kD (Observed)

Isotype

- IgG

Recommended Dilution Ratios

WB 1:500-1:2000

ELISA 1:10000

Not yet tested in other applications.

Storage

Storage*

-15°C to -25°C/1 year (Do not lower than -25°C)

Formulation

Liquid in PBS containing 50% glycerol, 0.5% BSA and 0.02% sodium azide.

Basic Information

Clonality

Polyclonal

Immunogen Information

Immunogen

The antiserum was produced against synthesized peptide derived from human C1R. AA range: 414-463

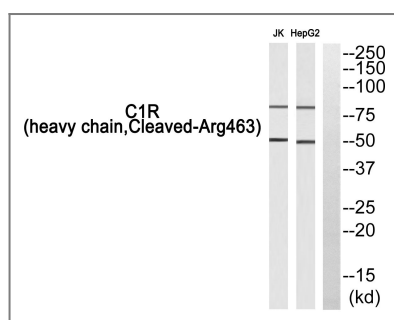
Specificity

Cleaved-C1r HC (R463) Polyclonal Antibody detects endogenous levels of fragment of activated C1r HC protein resulting from cleavage adjacent to R463.

Target Information

Gene name	C1R		
Protein Name	Complement C1r subcomponent		
	Organism	Gene ID	UniProt ID
	Human	715;	P00736;
Cellular Localization	Secreted .		
Tissue specificity	Adipose tissue,Colon endothelium,Liver,Plasma,Skin,		
Function	<p>Catalytic activity:Selective cleavage of Lys(or Arg)- -Ile bond in complement subcomponent C1s to form the active form of C1s (EC 3.4.21.42).,Function:C1r B chain is a serine protease that combines with C1q and C1s to form C1, the first component of the classical pathway of the complement system.,polymorphism:Complement component C1r deficiency [MIM:216950] leads to the failure of the classical complement system activation pathway (C1 deficiency). Individuals with C1 deficiency are highly susceptible to infections by microorganisms and have greater risk in developing autoimmune diseases such as systemic lupus erythematosus (SLE).,PTM:The iron and 2-oxoglutarate dependent 3-hydroxylation of aspartate and asparagine is (R) stereospecific within EGF domains.,similarity:Belongs to the peptidase S1 family.,similarity:Contains 1 EGF-like domain.,similarity:Contains 1 peptidase S1 domain.,similarity:Contains 2 CUB domains.,similarity:Contains 2 Sushi (CCP/SCR) domains.,subunit:C1 is a calcium-dependent trimolecular complex of C1q, C1r and C1s in the molar ration of 1:2:2. C1r is a dimer of identical chains, each of which is activated by cleavage into two chains, A and B, connected by disulfide bonds.,</p>		

Validation Data



Western blot analysis of C1R (heavy chain, Cleaved-Arg463) Antibody. The lane on the right is blocked with the C1R (heavy chain, Cleaved-Arg463) peptide.

Contact information

Orders: order.cn@immunoway.com
 Support: support.cn@immunoway.com
 Telephone: 400-8787-807(China)
 Website: <http://www.immunoway.com.cn>
 Address: 2200 Ringwood Ave San Jose, CA 95131 USA



Please scan the QR code to access additional product information:
Cleaved C1r HC (Arg463) Rabbit pAb

