

# Negative Control for Mouse IgG1, kappa Primary Antibody

CatalogNo: VN0001

## Key Features

### Host Species

- Mouse

### Reactivity

- Human, Mouse, Rat, Bovine, Pig, Chick,

### Applications

- IHC, IP, IF, ELISA

### Isotype

- IgG1, Kappa

## Recommended Dilution Ratios

IHC 1:200-1000

IF 1:100-500

ELISA 1:1000-5000

## Storage

**Storage\*** -15°C to -25°C/1 year (Do not lower than -25°C)

**Formulation** PBS, 50% glycerol, 0.05% Proclin 300, 0.05% BSA

## Basic Information

**Clonality** Monoclonal

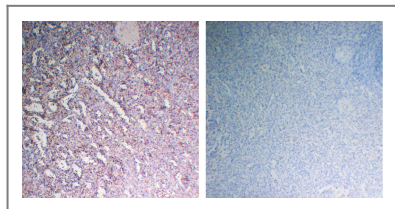
## Immunogen Information

## Target Information

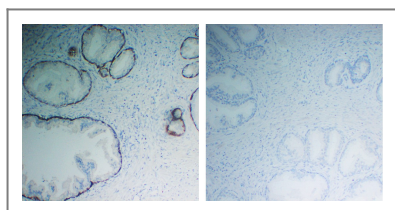
**Protein Name**

**Cellular Localization** No staining

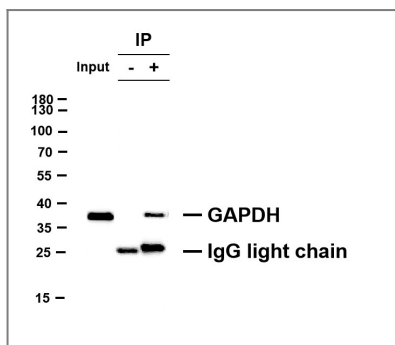
## Validation Data



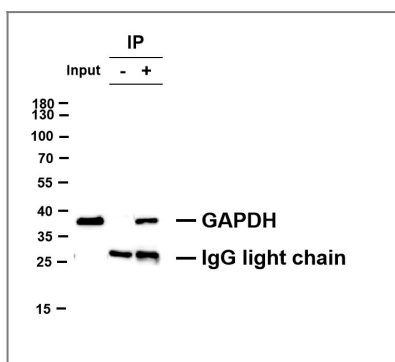
Immunohistochemical analysis of paraffin-embedded human spleen tissue using anti-CD42b mouse mAb (left) and mouse IgG1, kappa monoclonal control (VN001, right).



Immunohistochemical analysis of paraffin-embedded human prostate tissue using anti-Cytokeratin 14 mouse mAb (YM4064, left) and mouse IgG1, kappa monoclonal control (VN001, right).



GAPDH was immunoprecipitated from HeLa whole cell lysate with anti-GAPDH (PTR2304) antibody. Western blot was performed on the immunoprecipitate using anti-GAPDH antibody, and followed by the HRP-conjugated Goat anti-Mouse IgG (H + L) antibody. Lane 1 (Input) : HeLa whole cell lysate Lane 2 (-) : Mouse monoclonal IgG1 (vn0001, Isotype Control) instead of GAPDH antibody in HeLa whole cell lysate. Lane 3 (+) : GAPDH antibody IP in HeLa whole cell lysate



GAPDH was immunoprecipitated from SW480 whole cell lysate with anti-GAPDH (PTR2304) antibody. Western blot was performed on the immunoprecipitate using anti-GAPDH antibody, and followed by the HRP-conjugated Goat anti-Mouse IgG (H + L) antibody. Lane 1 (Input) : SW480 whole cell lysate Lane 2 (-) : Mouse monoclonal IgG1 (VN0001, Isotype Control) instead of GAPDH antibody in SW480 whole cell lysate. Lane 3 (+) : GAPDH antibody IP in SW480 whole cell lysate

## Contact information

Orders: order.cn@immunoway.com  
 Support: support.cn@immunoway.com  
 Telephone: 400-8787-807(China)  
 Website: <http://www.immunoway.com.cn>  
 Address: 2200 Ringwood Ave San Jose, CA 95131 USA



Please scan the QR code to access additional product information:  
**Negative Control for Mouse IgG1, kappa Primary Antibody**

