

## Donkey Anti Mouse IgG (AbFluor 647)

CatalogNo: RS4650

### Key Features

#### Host Species

- Donkey

#### Reactivity

- Mouse

#### Applications

- IF,FC

#### Conjugate

- AbFluor 647

### Storage

#### Storage\*

Stable for one year at -15°C to -25°C from date of shipment. For maximum recovery of product, centrifuge the original vial after thawing and prior to removing the cap. Aliquot to avoid repeated freezing and thawing

#### Formulation

Liquid in PBS, pH 7.4, containing 0.02% Sodium Azide as preservative, 1% BSA as stabilizer and 50% Glycerol.

### Recommended Dilution Ratios

Optimal working dilutions should be determined experimentally by the investigator  
Suggested starting 1:50-1:300 dilutions for most fluorescent applications.

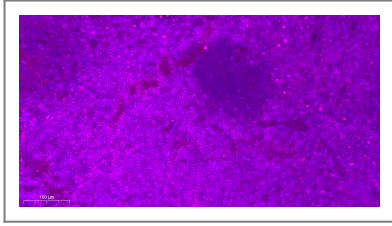
### Basic Information

### Immunogen Information

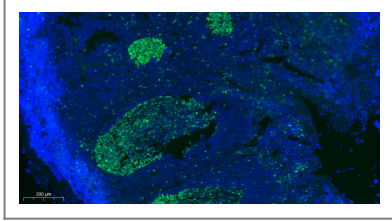
### Target Information

Protein Name

## Validation Data



Immunofluorescence analysis of Human tonsils. 1,primary Antibody was diluted at 1:200(4~C overnight). 2, Secondary antibody was diluted at 1:200(room temperature, 50min).



Immunofluorescence analysis of Human tonsils. 1,primary Antibody was diluted at 1:200(4~C overnight). 2, Secondary antibody was diluted at 1:200(room temperature, 50min).

## Contact information

Orders: [order.cn@immunoway.com](mailto:order.cn@immunoway.com)  
Support: [support.cn@immunoway.com](mailto:support.cn@immunoway.com)  
Telephone: 400-8787-807(China)  
Website: <http://www.immunoway.com.cn>  
Address: 2200 Ringwood Ave San Jose, CA 95131 USA



Please scan the QR code to access additional product information:  
**Donkey Anti Mouse IgG (AbFluor 647)**

For Research Use Only. Not for Use in Diagnostic Procedures.

[Antibody](#) | [ELISA Kits](#) | [Protein](#) | [Reagents](#)