

## Goat anti Mouse IgG(H+L) (Cy3)

CatalogNo: RS4308

### Key Features

#### Host Species

- Goat

#### Reactivity

- Mouse

#### Applications

- ELISA,IHC,IF,FC

#### Conjugate

- Cy3

### Storage

**Storage\*** -15°C to -25°C/1 year(Do not lower than -25°C)

**Formulation** Liquid in 0.01M Phosphate Buffered Saline, pH 7.2, containing 1% BSA, 50% glycerol, 0.02% Sodium Azide

### Recommended Dilution Ratios

IHC (1:200-1:1000)

IF (1:200-1:1000)

Flow Cyt (1:2000-1:4000)

ELISA (Use at an assay dependent concentration)

### Basic Information

### Immunogen Information

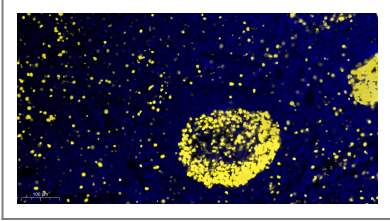
**Immunogen** Mouse IgG

### Target Information

**Protein Name**

---

## Validation Data



Fluorescence immunohistochemical analysis of Human tonsil tissue (formalin-fixed paraffin-embedded section).

## Contact information

Orders: [order.cn@immunoway.com](mailto:order.cn@immunoway.com)  
Support: [support.cn@immunoway.com](mailto:support.cn@immunoway.com)  
Telephone: 400-8787-807(China)  
Website: <http://www.immunoway.com.cn>  
Address: 2200 Ringwood Ave San Jose, CA 95131 USA



Please scan the QR code to access additional product information:  
**Goat anti Mouse IgG(H+L) (Cy3)**

---

For Research Use Only. Not for Use in Diagnostic Procedures.

[Antibody](#) | [ELISA Kits](#) | [Protein](#) | [Reagents](#)