

Goat Anti Mouse IgG(H+L) (AbFluor 555)

CatalogNo: RS3408

Key Features

Host Species

- Goat

Reactivity

- Mouse

Applications

- ELISA,IF,FC

Conjugate

- AbFluor 555

Storage

Storage*

Stable for one year at -15°C to -25°C from date of shipment. For maximum recovery of product, centrifuge the original vial after thawing and prior to removing the cap. Aliquot to avoid repeated freezing and thawing

Formulation

1 mg/ml, liquid in 0.01M Phosphate Buffered Saline, pH 7.2, containing 1% BSA, 50% glycerol, 0.02% Sodium Azide

Recommended Dilution Ratios

IF 1:200-1:1000

Flow Cyt 1:100-1:1000

ELISA (Use at an assay dependent concentration)

Basic Information

Immunogen Information

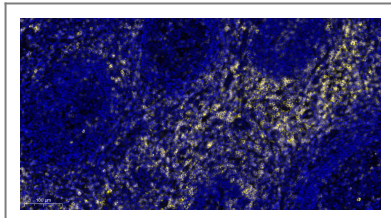
Target Information

Protein Name

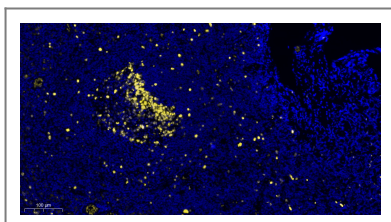
Validation Data

| | | |
|-----------------|---------|------------|
| Alexa Fluor 350 | 346/442 | Blue |
| Alexa Fluor 405 | 401/421 | Blue |
| Alexa Fluor 488 | 496/519 | Green |
| Alexa Fluor 532 | 532/553 | Yellow |
| Alexa Fluor 555 | 555/565 | Yellow |
| Alexa Fluor 568 | 578/603 | Red/Orange |
| Alexa Fluor 594 | 590/617 | Red/Orange |
| Alexa Fluor 633 | 632/647 | Red |
| Alexa Fluor 647 | 650/665 | Red |
| Alexa Fluor 660 | 663/690 | Near IR |
| Alexa Fluor 680 | 679/702 | Near IR |
| Alexa Fluor 750 | 749/775 | Near IR |
| Alexa Fluor 790 | 784/814 | Near IR |

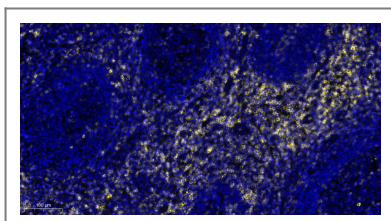
To use the Alexa Fluors with fluorescent imagers, use a spectral line of the blue laser diode for Alexa Fluors 405, a cyan (488 nm) laser for Alexa Fluors 488, a yellow (526 nm) laser for Alexa Fluor 550 or 594, and a red (633 nm) laser for Alexa Fluor 649. The Alexa Fluor 680 and 790 fluors are compatible with laser- and filter-based infrared imaging instruments that emit in the 700 nm, and 800 nm



Immunofluorescence analysis of paraffin-embedded Human Immunohistochemical analysis of paraffin-embedded Human Thyroid tissue. 1, primary Antibody was diluted at 1:200(4°C,overnight). 2, EDTA pH 9.0 was used for antibody retrieval(>98°C,20min). 3,Secondary antibody was diluted at 1:200(room temperature, 30min). tissue. 1, primary Antibody was diluted at 1:200(4°C,overnight). 2, EDTA pH 9.0 was used for antibody retrieval(>98°C,20min). 3,Secondary antibody was diluted at 1:200(room temperature, 30min).



Fluorescence immunohistochemical analysis of Human tonsil tissue (formalin-fixed paraffin-embedded section).



Fluorescence immunohistochemical analysis of Human tonsil tissue (formalin-fixed paraffin-embedded section).

Contact information

Orders: order.cn@immunoway.com
Support: support.cn@immunoway.com
Telephone: 400-8787-807(China)
Website: <http://www.immunoway.com.cn>
Address: 2200 Ringwood Ave San Jose, CA 95131 USA



Please scan the QR code to access additional product information:
Goat Anti Mouse IgG(H+L) (AbFluor 555)