

## Nanoantibody anti Mouse for IP (AbFluor 680)

CatalogNo: RS0090

### Key Features

#### Reactivity

- Mouse

#### Conjugate

- AbFluor 680

#### Applications

- WB,IF

### Storage

**Storage\*** -15°C to -25°C/1 year (Do not lower than -25°C)

### Recommended Dilution Ratios

WB 5000-20000

### Basic Information

**Source** Camel, VHH his-tag

**Purification** Camel, VHH his-tag

### Immunogen Information

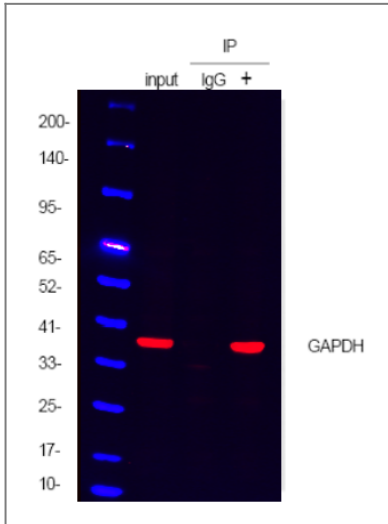
#### Specificity

This antibody is immunoblotting reagents that enable the trouble-free detection of immunoblotted target protein bands, without interference from denatured IgG. This allows to detect the (co-)immunoprecipitated protein without masking by the IgG heavy (50 kDa) and light chains (25 kDa). In general, this interference tends to originate from secondary antibodies which recognize primary antibodies released with the antigen during the immunoprecipitation procedure or endogenous IgGs from the lysate itself. This antibody only recognize native (non-reduced) antibodies and therefore the detection of heavy and light chains is highly minimized. This antibody has no reaction with Rabbit/Human IgGs.

## Target Information

Protein Name

## Validation Data



Immunoprecipitating GAPDH in HeLa whole cell lysate with mouse anti GAPDH antibody (Catalog YM3029). Western blot was performed on the immunoprecipitate using anti-GAPDH antibody at 1:5000 dilution, and followed by the AbFluor 680 labeled anti-Mouse IgG antibody at 1:5000 dilution. Lane 1 (Input): 20ug HeLa whole cell lysate. Lane 2 (-): Mouse monoclonal IgG1 Isotype Control (Catalog VN0001, ) instead of GAPDH antibody in HeLa whole cell lysate. Lane 3 (+): 6ug GAPDH antibody IP in 1000ug HeLa whole cell lysate

## Contact information

Orders: [order.cn@immunoway.com](mailto:order.cn@immunoway.com)  
Support: [support.cn@immunoway.com](mailto:support.cn@immunoway.com)  
Telephone: 400-8787-807(China)  
Website: <http://www.immunoway.com.cn>  
Address: 2200 Ringwood Ave San Jose, CA 95131 USA



Please scan the QR code to access additional product information:  
**Nanoantibody anti Mouse for IP (AbFluor 680)**

For Research Use Only. Not for Use in Diagnostic Procedures.

[Antibody](#) | [ELISA Kits](#) | [Protein](#) | [Reagents](#)